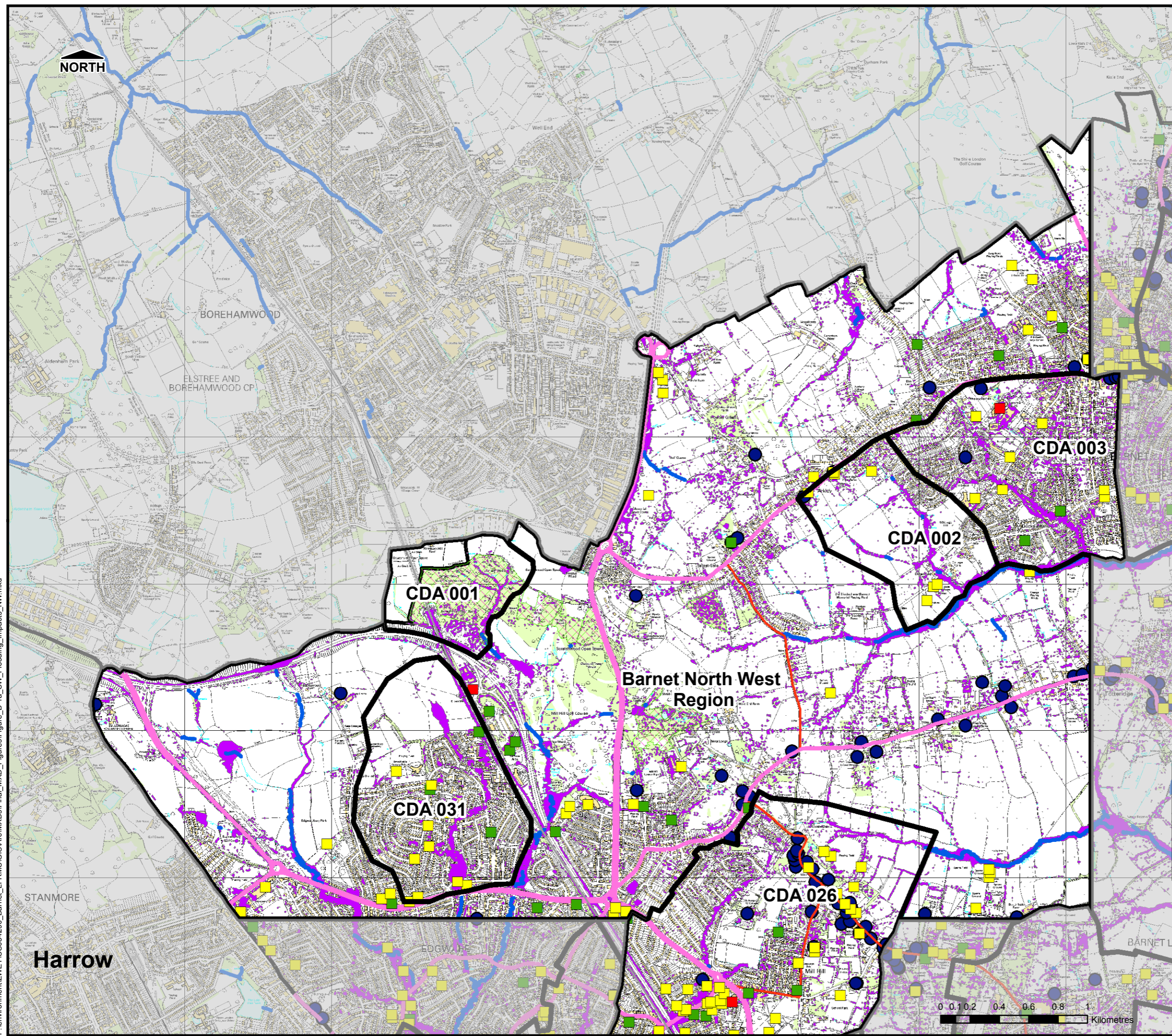


THIS DRAWING MAY BE USED ONLY FOR THE PURPOSE INTENDED



Legend

- Borough Administrative Boundary
- Main River
- 200yr Surface Water Event
- Emergency services
- Public Services
- Power, Water & Petrol services
- SSSI
- RAMSAR
- AONB
- Listed Buildings
- Registered Parks Gardens
- Ancient Woodland

Critical Services

- Emergency services
- Public Services
- Power, Water & Petrol services

Designated Sites

- SSSI
- RAMSAR
- AONB

Heritage Features

- Listed Buildings
- Registered Parks Gardens
- Ancient Woodland

Transport links

- Railway
- A-Roads
- B-Roads

Barnet Local Flood Risk Management Strategy



This product includes mapping data licensed from Ordnance Survey with the permission of © Crown copyright [and database rights] 2016 OS 100017674 EUL. This product includes data licensed from the London Borough of Barnet with the permission of © London Borough of Barnet, 2016. All rights reserved.



Scale at A3 1:25,000	Date March 2016	Drawn by T. Godman	Approved by C. Despins
--------------------------------	---------------------------	------------------------------	----------------------------------

Surface Water Flooding Impact Map (NW region)

Consultant

CAPITA

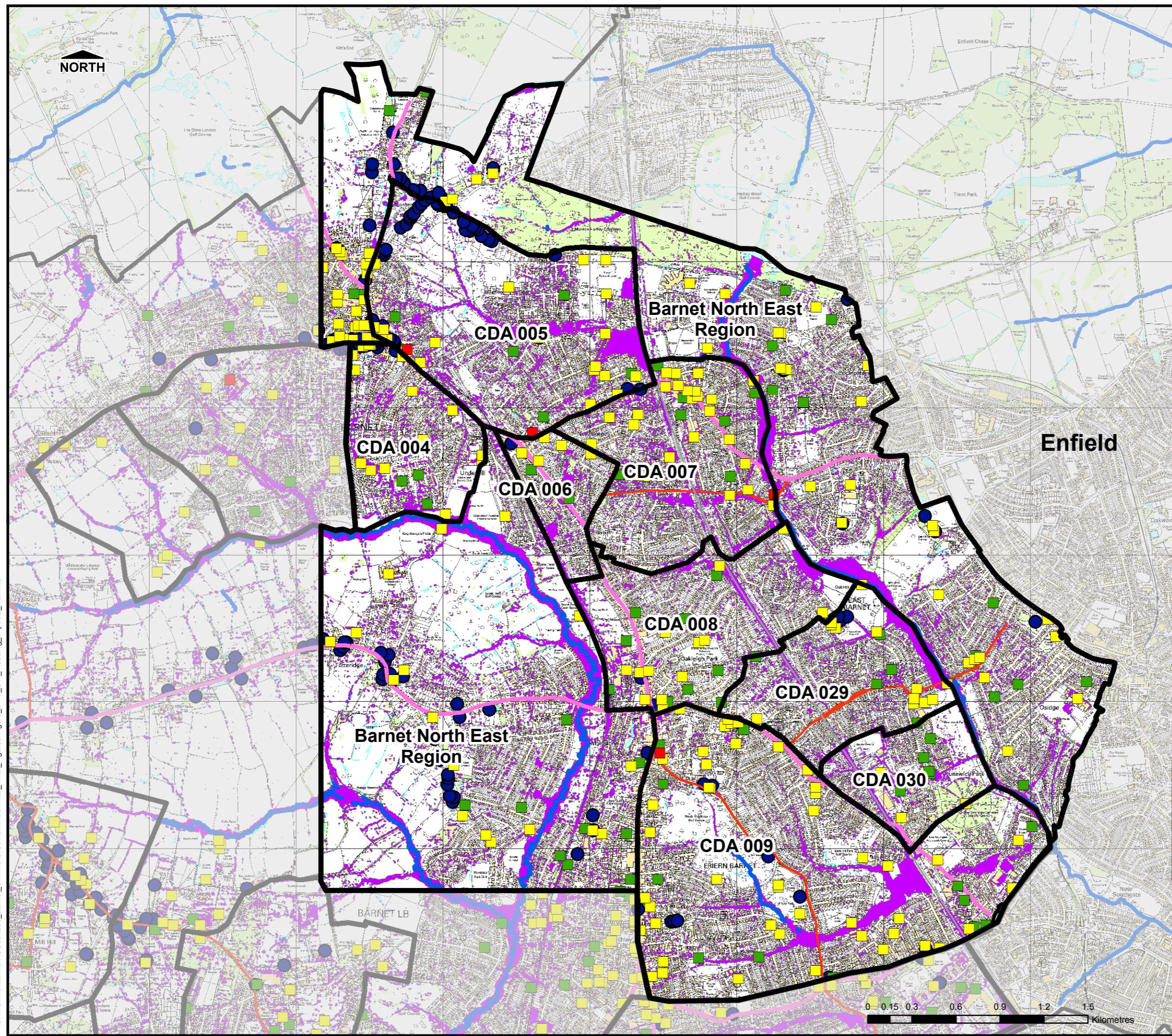
Capita
Level Four,
65 Gresham Street,
London
EC2V 7NQ

FIGURE B-1a

P:\environment\ZMET\CS054290_Barnet_LFRMS\GIS\ArcMXDs\Final_MXD_Figures\Figure_B-1a_SW_Flooding_Impacts_NW.mxd

THIS DRAWING MAY BE USED ONLY FOR THE PURPOSE INTENDED

P:\environment\ZMET\CS084290_Barnet_LFRMS\GIS\Ac\MXD\Final\MXD_Figures\Figure_B-1b_SW_Flooding_Impacts_NE.mxd



Legend

- Borough Administrative Boundary
- Main River
- 200yr Surface Water Event

Transport Links

- A-Roads
- B-Roads
- Railway

Critical Services

- Emergency services
- Public Services
- Power, Water & Petrol services

Designated Sites

- SSSI
- AONB (None in Barnet)
- RAMSAR

Heritage Features

- Ancient Woodland
- Registered Parks Gardens
- Listed Buildings

Barnet Local Flood Risk Management Strategy



This product includes mapping data licensed from Ordnance Survey with the permission of © Crown copyright [and database rights] 2016 OS 100017674 EUL. This product includes data licensed from the London Borough of Barnet with the permission of © London Borough of Barnet, 2016. All rights reserved.



Scale at A3 1:25,000	Date March 2016	Drawn by T. Godman	Approved by C. Despins
--------------------------------	---------------------------	------------------------------	----------------------------------

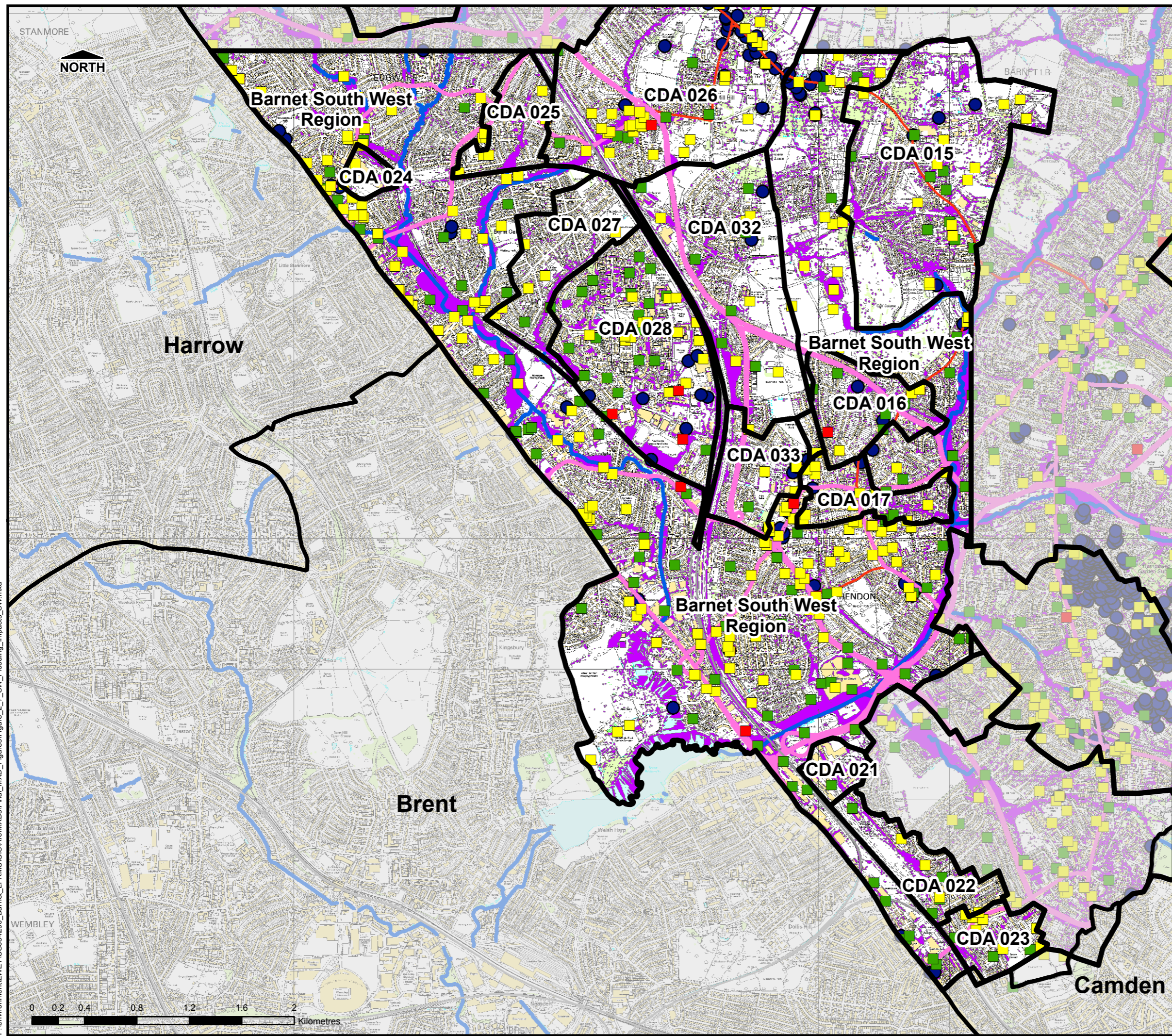
Surface Water Flooding Impact Map (NE region)

Consultant

Capita
Level Four,
65 Gresham Street,
London
EC2V 7NQ

FIGURE B-1b

THIS DRAWING MAY BE USED ONLY FOR THE PURPOSE INTENDED



Legend

- Borough Administrative Boundary
- Main River
- 200yr Surface Water Event
- Railway
- A-Roads
- B-Roads

Critical Services

- Emergency services
- Public Services
- Power, Water & Petrol services

Designated Sites

- SSSI
- RAMSAR
- AONB

Heritage Features

- Listed Buildings
- Registered Parks Gardens
- Ancient Woodland

Barnet Local Flood Risk Management Strategy



This product includes mapping data licensed from Ordnance Survey with the permission of © Crown copyright [and database rights] 2016 OS 100017674 EUL. This product includes data licensed from the London Borough of Barnet with the permission of © London Borough of Barnet, 2016. All rights reserved.



Scale at A3 1:28,000	Date March 2016	Drawn by T. Godman	Approved by C. Despins
--------------------------------	---------------------------	------------------------------	----------------------------------

Surface Water Flooding Impact Map (SW region)

Consultant

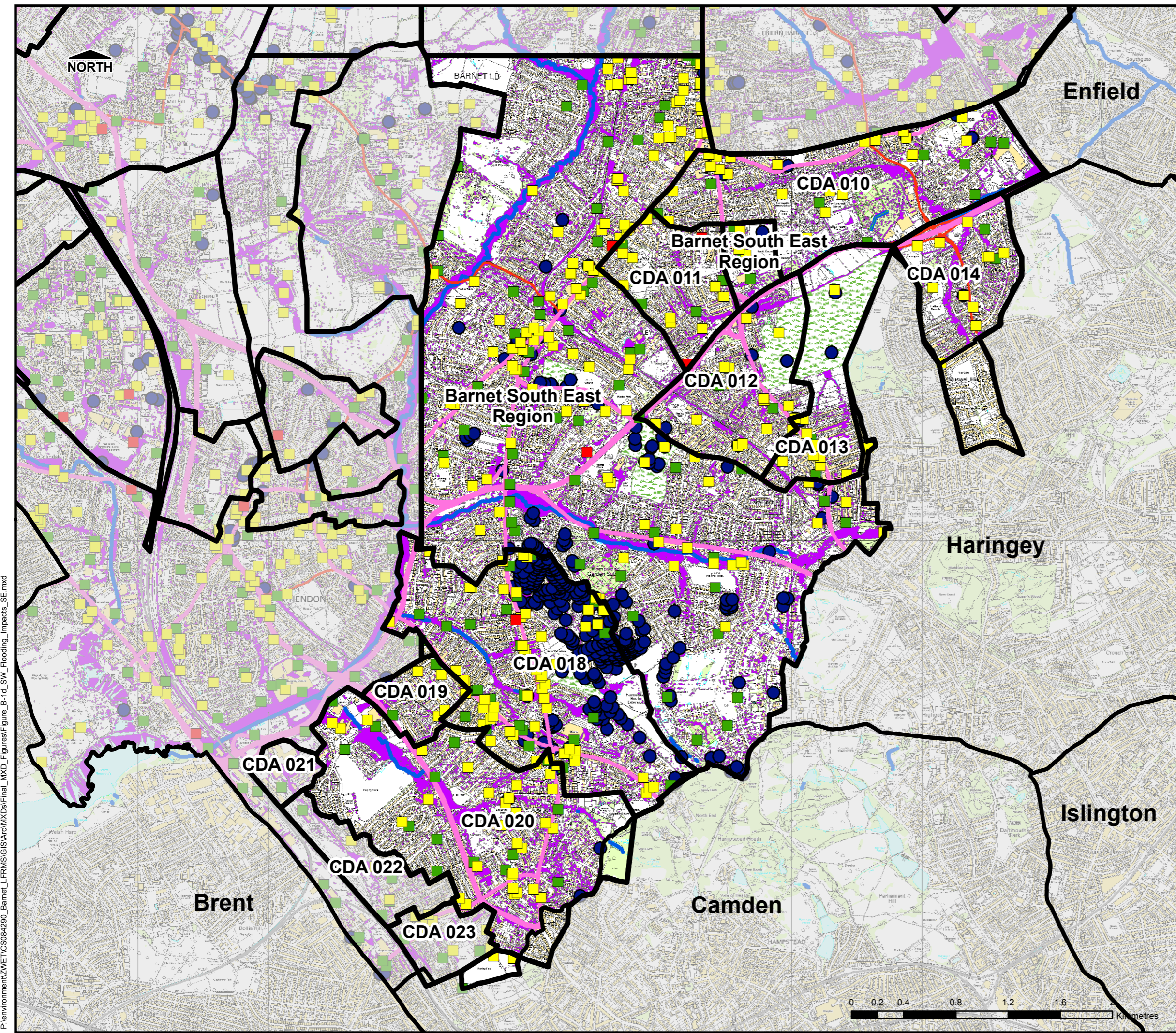
CAPITA

Capita
Level Four,
65 Gresham Street,
London
EC2V 7NQ

FIGURE B-1c

P:\environment\ZWE\TCS054290_Barnet_LFRMS\GIS\Arc\MXDs\Final_MXD_Figures\Figure_2_7_SW_Flooding_Impacts_SW.mxd

THIS DRAWING MAY BE USED ONLY FOR THE PURPOSE INTENDED



Legend

- Borough Administrative Boundary
- Main River
- 200yr Surface Water Event

Critical Services

- Emergency services
- Public Services
- Power, Water & Petrol services

Designated Sites

- SSSI
- RAMSAR
- AONB

Transport Links

- Railway
- A-Roads
- B-Roads

Heritage Features

- Listed Buildings
- Registered Parks Gardens
- Ancient Woodland

Barnet Local Flood Risk Management Strategy



This product includes mapping data licensed from Ordnance Survey with the permission of © Crown copyright [and database rights] 2016 OS 100017674 EUL. This product includes data licensed from the London Borough of Barnet with the permission of © London Borough of Barnet, 2016. All rights reserved.



Scale at A3 1:28,000	Date March 2016	Drawn by T. Godman	Approved by C. Despins
--------------------------------	---------------------------	------------------------------	----------------------------------

Surface Water Flooding Impact Map (SE region)

Consultant

CAPITA
 Capita
 Level Four,
 65 Gresham Street,
 London
 EC2V 7NQ

FIGURE B1-d



P:\environment\ZMET\CS08\290_Barnet_LFRMS\GIS\Arc\MXDs\Final_MXD_Figures\Figure_B-1-d_SW_Flooding_Impacts_SE.mxd

THIS DRAWING MAY BE USED ONLY FOR THE PURPOSE INTENDED

NORTH

Legend

- Borough Administrative Boundary
- Main River
- 200yr Surface Water Event
- Railway
- A-Roads
- B-Roads

Critical Services

- Emergency services
- Public Services
- Power, Water & Petrol services

Designated Sites

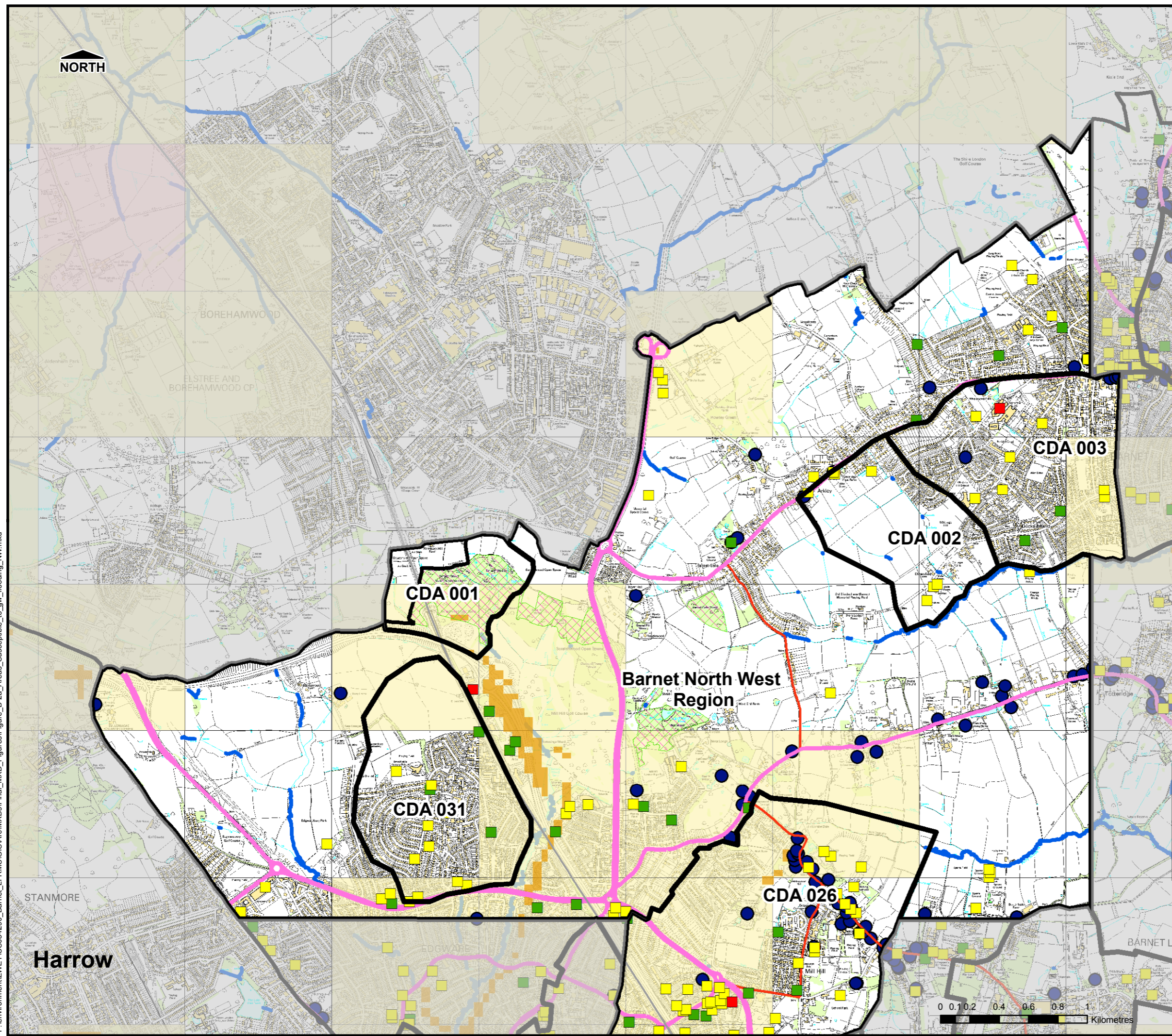
- SSSI
- RAMSAR
- AONB

Heritage Features

- Listed Buildings
- Registered Parks Gardens
- Ancient Woodland

Areas Susceptible to Groundwater Flooding

- < 25%
- >= 25% < 50%
- >= 50% < 75%
- >= 75%
- Permeable Superficial Deposits



Barnet Local Flood Risk Management Strategy



This product includes mapping data licensed from Ordnance Survey with the permission of © Crown copyright [and database rights] 2016 OS 100017674 EUL. This product includes data licensed from the London Borough of Barnet with the permission of © London Borough of Barnet, 2016. All rights reserved.



Scale at A3 1:25,000	Date March 2016	Drawn by T. Godman	Approved by C. Despins
--------------------------------	---------------------------	------------------------------	----------------------------------

Areas Susceptible to Groundwater Flooding (NW region)

Consultant

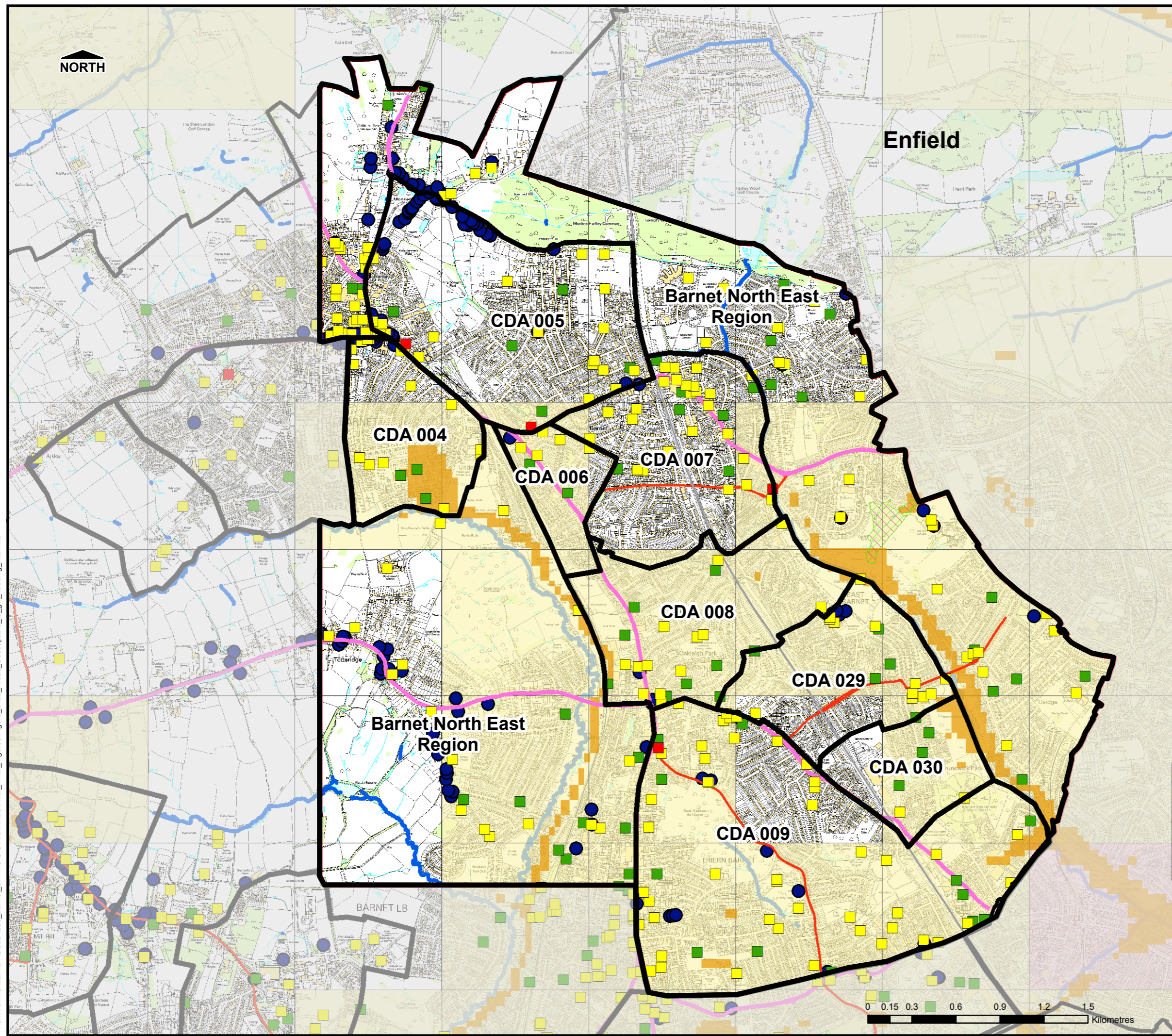
CAPITA

Capita
Level Four,
65 Gresham Street,
London
EC2V 7NQ

FIGURE B-2a

P:\environment\ZMETC\S084290_Barnet_LFRMS\GIS\Arc\MXDs\Final_MXD_Figures\Figure_B-2a_Areas_Susceptible_to_gw_flooding_NW.mxd

THIS DRAWING MAY BE USED ONLY FOR THE PURPOSE INTENDED



Legend

- Borough Administrative Boundary
- Main River
- 200yr Surface Water Event
- Emergency services
- Public Services
- Power, Water & Petrol services
- SSSI
- AONB
- RAMSAR
- Ancient Woodland
- Registered Parks Gardens
- Listed Buildings

Transport Links

- A-Roads
- B-Roads
- Railway

Critical Services

- Emergency services
- Public Services
- Power, Water & Petrol services

Designated Sites

- SSSI
- AONB
- RAMSAR
- Ancient Woodland
- Registered Parks Gardens
- Listed Buildings

Areas Susceptible to Groundwater Flooding

- < 25%
- >= 25% < 50%
- >= 50% < 75%
- >= 75%
- Permeable Superficial Deposits

Heritage Features

- Ancient Woodland
- Registered Parks Gardens
- Listed Buildings

Barnet Local Flood Risk Management Strategy



This product includes mapping data licensed from Ordnance Survey with the permission of © Crown copyright [and database rights] 2016 OS 100017674 EUL. This product includes data licensed from the London Borough of Barnet with the permission of © London Borough of Barnet, 2016. All rights reserved.



Scale at A3 1:25,000	Date March 2016	Drawn by T. Godman	Approved by C. Despins
--------------------------------	---------------------------	------------------------------	----------------------------------

Areas Susceptible to Groundwater Flooding (NE region)

Consultant

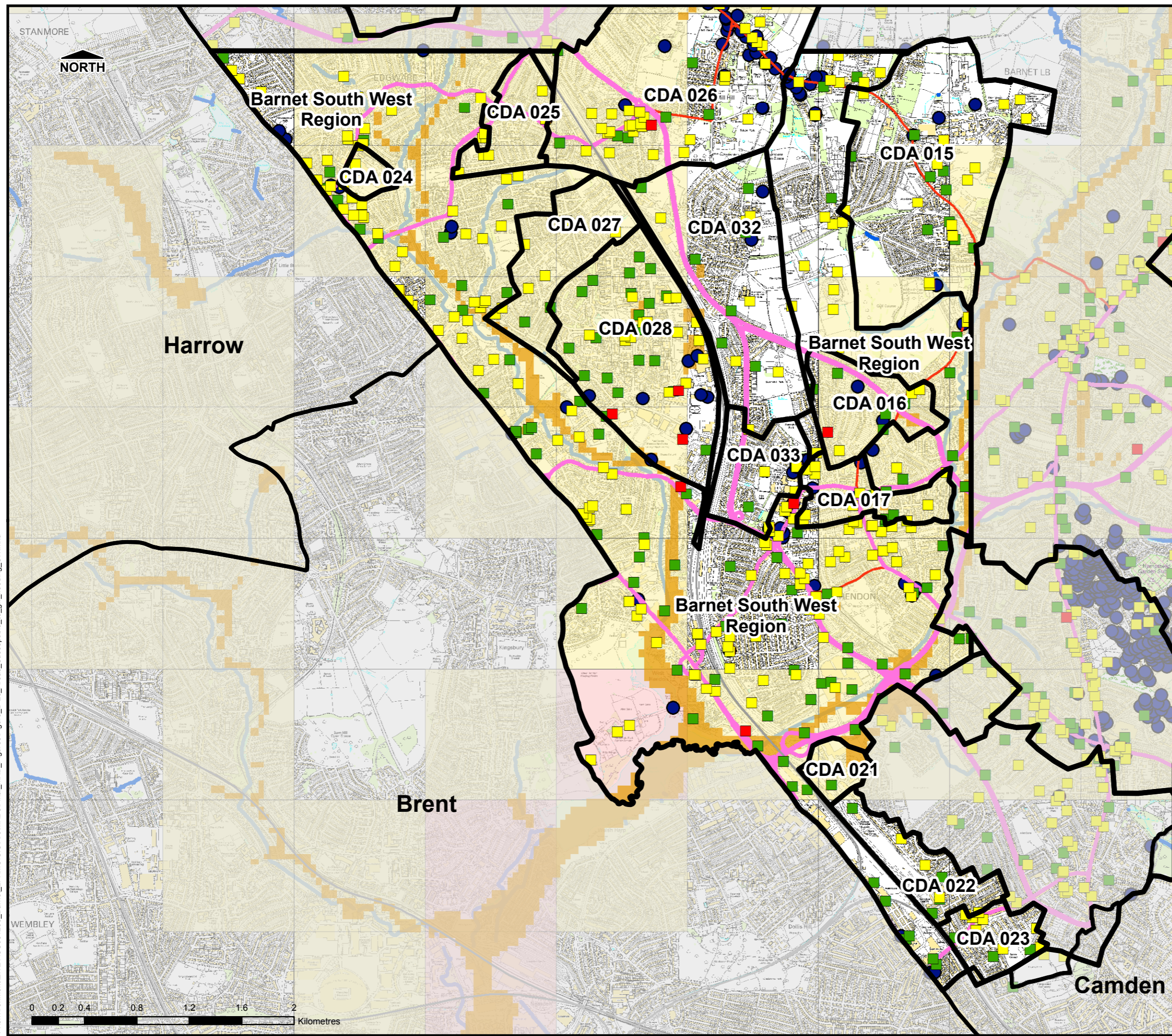
CAPITA

Capita
Level Four,
65 Gresham Street,
London
EC2V 7NQ

FIGURE B-2b

P:\environment\ZMET\CS084290_Barnet_LFRMS\GIS\Ac\MXD\Final_MXD_Figures\Figure_B-2b_Areas_Susceptible_to_gw_flooding_NE.mxd

THIS DRAWING MAY BE USED ONLY FOR THE PURPOSE INTENDED



Legend

- Borough Administrative Boundary
- Main River
- 200yr Surface Water Event
- Railway
- A-Roads
- B-Roads

Critical Services

- Emergency services
- Public Services
- Power, Water & Petrol services

Designated Sites

- SSSI
- RAMSAR
- AONB

Heritage Features

- Listed Buildings
- Registered Parks Gardens
- Ancient Woodland

Areas Susceptible to Groundwater Flooding

- < 25%
- >= 25% < 50%
- >= 50% < 75%
- >= 75%
- Permeable Superficial Deposits

Barnet Local Flood Risk Management Strategy



This product includes mapping data licensed from Ordnance Survey with the permission of © Crown copyright [and database rights] 2016 OS 100017674 EUL. This product includes data licensed from the London Borough of Barnet with the permission of © London Borough of Barnet, 2016. All rights reserved.

Scale at A3 1:28,000	Date March 2016	Drawn by T. Godman	Approved by C. Despins
--------------------------------	---------------------------	------------------------------	----------------------------------

Areas Susceptible to Groundwater Flooding (SW region)

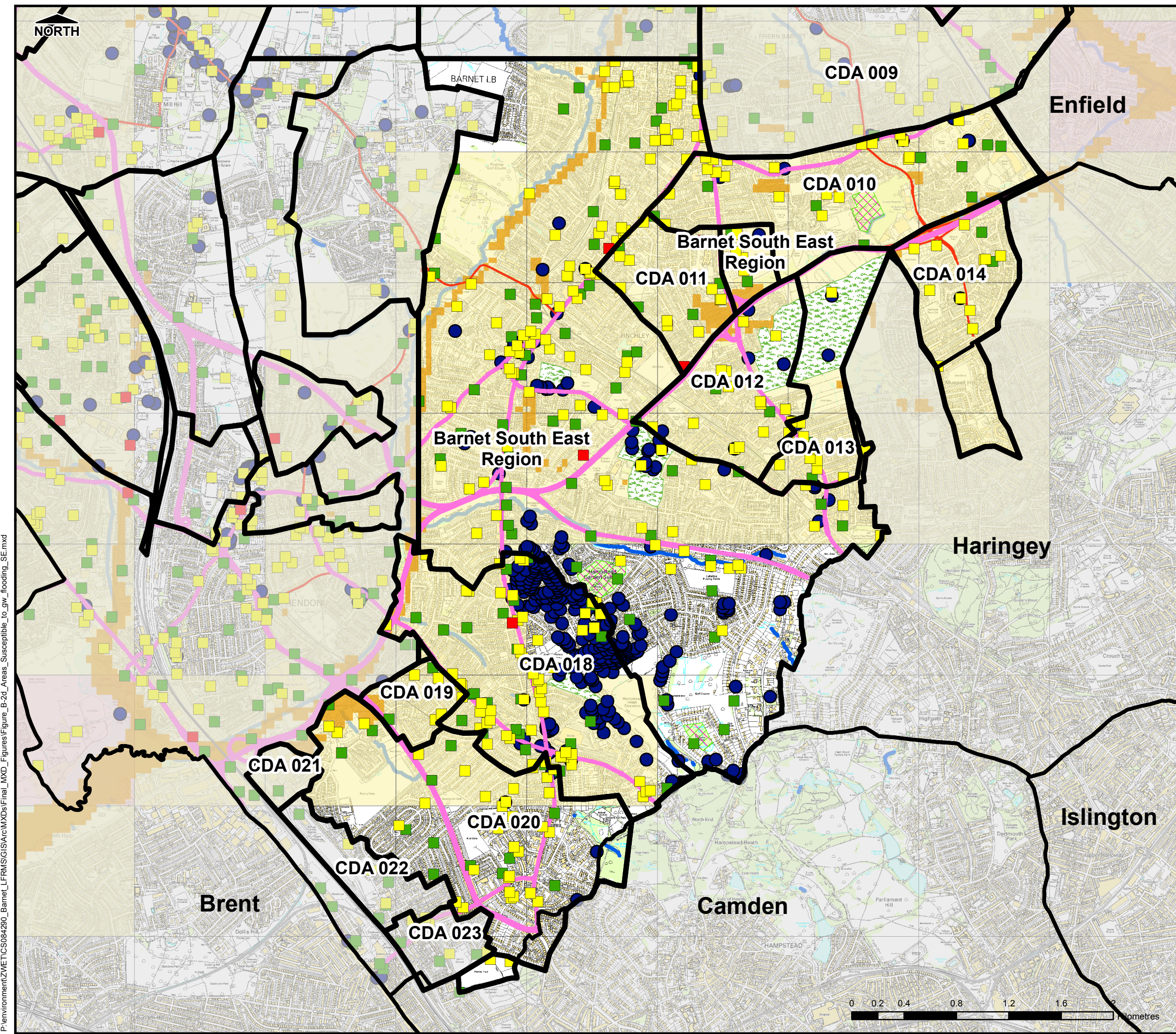
Consultant

Capita
Level Four,
65 Gresham Street,
London
EC2V 7NQ

FIGURE B-2c

P:\environment\ZMET\CS084290_Barnet_LFRMS\GIS\ArcMXDs\Final_MXD_Figures\Figure_B-2c_Areas_Susceptible_to_gw_flooding_SW.mxd

THIS DRAWING MAY BE USED ONLY FOR THE PURPOSE INTENDED



Legend

- Borough Administrative Boundary
- Main River
- 200yr Surface Water Event Transport Links
- Emergency services
- Public Services
- Power, Water & Petrol services
- Railway
- A-Roads
- B-Roads

Critical Services

Designated Sites

- SSSI
- RAMSAR
- AONB

Heritage Features

- Listed Buildings
- Registered Parks Gardens
- Ancient Woodland

Areas Susceptible to Groundwater Flooding

- < 25%
- >= 25% < 50%
- >= 50% < 75%
- >= 75%
- Permeable Superficial Deposits

Barnet Local Flood Risk Management Strategy



This product includes mapping data licensed from Ordnance Survey with the permission of © Crown copyright [and database rights] 2016 OS 100017674 EUL. This product includes data licensed from the London Borough of Barnet with the permission of © London Borough of Barnet, 2016. All rights reserved.



Scale at A3 1:28,000	Date March 2016	Drawn by T. Godman	Approved by C. Despins
--------------------------------	---------------------------	------------------------------	----------------------------------

Areas Susceptible to Groundwater Flooding (SE region)

Consultant

CAPITA

Capita
Level Four,
65 Gresham Street,
London
EC2V 7NQ

FIGURE B-2d



P:\environment\ZMET\CS084290_Barnet_LFRM\GIS\Ac\WXDs\Final_MXD\Figures\Figure_B-2d_Areas_Susceptible_to_gw_flooding_SE.mxd

THIS DRAWING MAY BE USED ONLY FOR THE PURPOSE INTENDED

Legend

- Borough Administrative Boundary
- Main River
- 200yr Surface Water Event
- Flood Zone 2
- Flood Zone 3
- Emergency services
- Public Services
- Power, Water & Petrol services
- SSSI
- RAMSAR
- AONB
- Listed Buildings
- Registered Parks Gardens
- Ancient Woodland

Transport links

- Railway
- A-Roads
- B-Roads

Critical Services

- Emergency services
- Public Services
- Power, Water & Petrol services

Designated Sites

- SSSI
- RAMSAR
- AONB

Heritage Features

- Listed Buildings
- Registered Parks Gardens
- Ancient Woodland

Barnet Local Flood Risk Management Strategy



This product includes mapping data licensed from Ordnance Survey with the permission of © Crown copyright [and database rights] 2016 OS 100017674 EUL. This product includes data licensed from the London Borough of Barnet with the permission of © London Borough of Barnet, 2016. All rights reserved.



Scale at A3 1:25,000	Date March 2016	Drawn by T. Godman	Approved by C. Despins
--------------------------------	---------------------------	------------------------------	----------------------------------

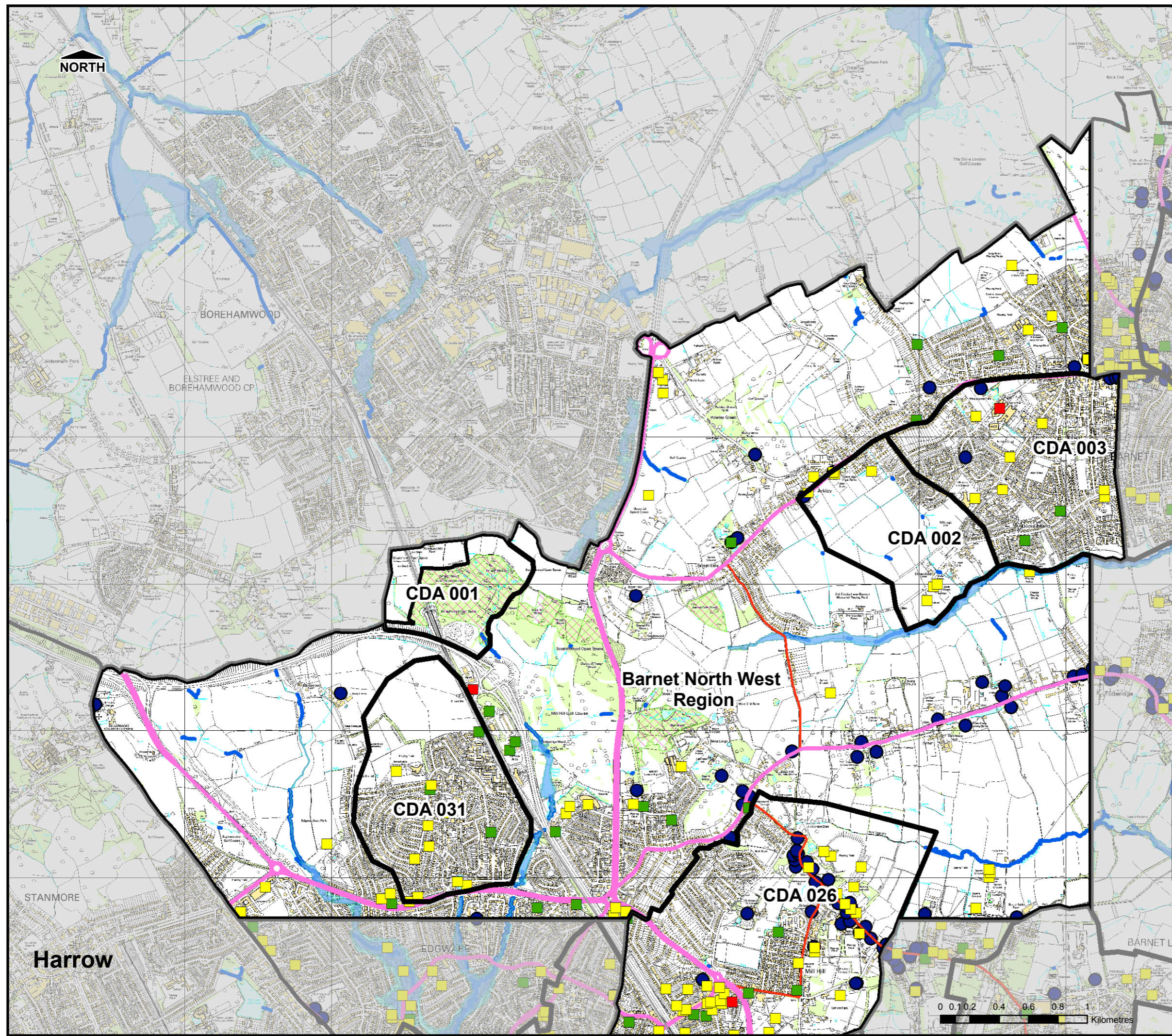
Areas Susceptible to Main River Flooding (NW region)

Consultant

CAPITA

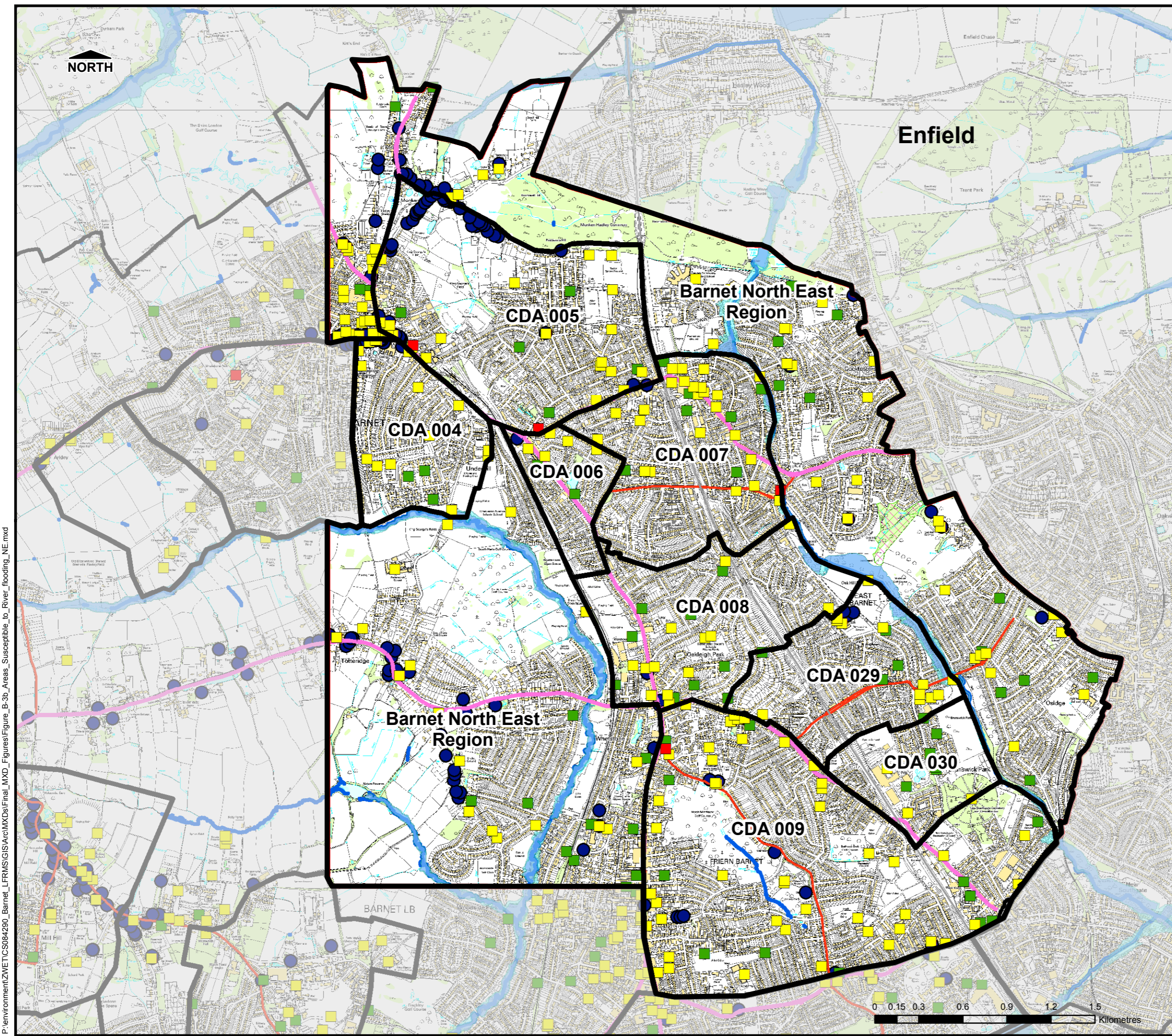
Capita
Level Four,
65 Gresham Street,
London
EC2V 7NQ

FIGURE B-3a



P:\environment\ZMET\CS084290_Barnet_LFRMS\GIS\Arc\MXDs\Final_MXD_Figures\Figure_B-3a_Areas_Susceptible_to_River_flooding_NW.mxd

THIS DRAWING MAY BE USED ONLY FOR THE PURPOSE INTENDED



Legend

- Borough Administrative Boundary
- Main River
- 200yr Surface Water Event
- Flood Zone 2
- Flood Zone 3

Transport Links

- A-Roads
- B-Roads
- Railway

Critical Services

- Emergency services
- Public Services
- Power, Water & Petrol services

Designated Sites

- SSSI
- AONB
- RAMSAR

Heritage Features

- Ancient Woodland
- Registered Parks Gardens
- Listed Buildings

Barnet Local Flood Risk Management Strategy



This product includes mapping data licensed from Ordnance Survey with the permission of © Crown copyright [and database rights] 2016 OS 100017674 EUL. This product includes data licensed from the London Borough of Barnet with the permission of © London Borough of Barnet, 2016. All rights reserved.



Scale at A3 1:25,000	Date March 2016	Drawn by T. Godman	Approved by C. Despins
--------------------------------	---------------------------	------------------------------	----------------------------------

Areas Susceptible to Main River Flooding (NE region)

Consultant

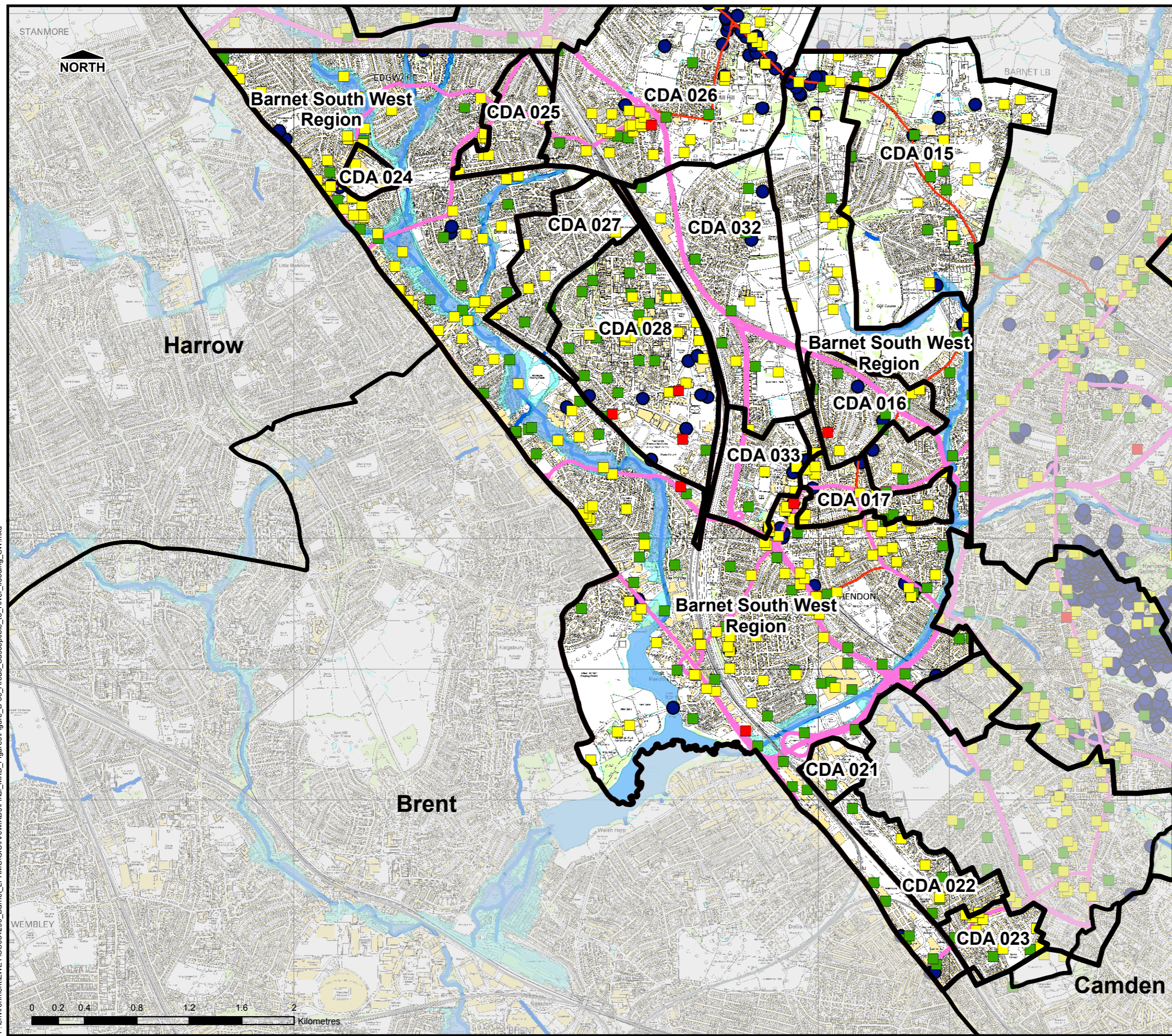
CAPITA

Capita
Level Four,
65 Gresham Street,
London
EC2V 7NQ

FIGURE B-3b

P:\environment\ZMET\CS004290_Barnet_LFRMS\GIS\Ac\MXDs\Final_MXD_Figures\Figure_B-3b_Areas_Susceptible_to_River_flooding_NE.mxd

THIS DRAWING MAY BE USED ONLY FOR THE PURPOSE INTENDED



Legend

- Borough Administrative Boundary
- Main River
- 200yr Surface Water Event
- Flood Zone 2
- Flood Zone 3
- Emergency services
- Public Services
- Power, Water & Petrol services
- SSSI
- RAMSAR
- AONB
- Listed Buildings
- Registered Parks Gardens
- Ancient Woodland

Transport Links

- Railway
- A-Roads
- B-Roads

Critical Services

- Emergency services
- Public Services
- Power, Water & Petrol services

Designated Sites

- SSSI
- RAMSAR
- AONB

Heritage Features

- Listed Buildings
- Registered Parks Gardens
- Ancient Woodland

Barnet Local Flood Risk Management Strategy



This product includes mapping data licensed from Ordnance Survey with the permission of © Crown copyright [and database rights] 2016 OS 100017674 EUL. This product includes data licensed from the London Borough of Barnet with the permission of © London Borough of Barnet, 2016. All rights reserved.



Scale at A3 1:28,000	Date March 2016	Drawn by T. Godman	Approved by C. Despins
--------------------------------	---------------------------	------------------------------	----------------------------------

Areas Susceptible to Main River Flooding (SW region)

Consultant

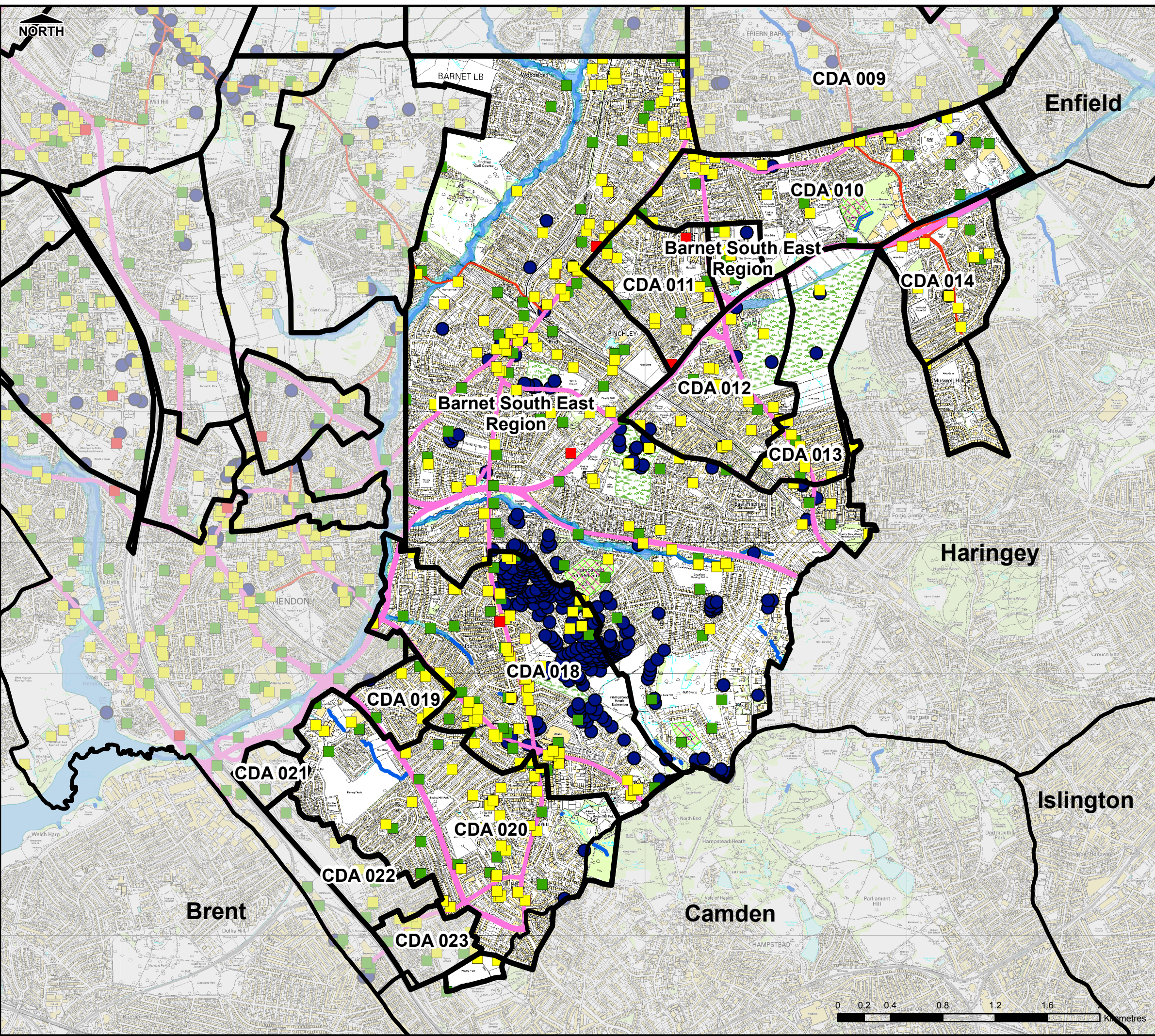
CAPITA

Capita
Level Four,
65 Gresham Street,
London
EC2V 7NQ

FIGURE B-3c

P:\environment\ZMET\CS04290_Barnet_LFRMS\GIS\ArcMXDs\Final_MXD_Figures\Figure_B-3c_Areas_Susceptible_to_River_flooding_SW.mxd

THIS DRAWING MAY BE USED ONLY FOR THE PURPOSE INTENDED



Legend

- Borough Administrative Boundary
- Main River
- 200yr Surface Water Event
- Flood Zone 2
- Flood Zone 3
- A-Roads
- B-Roads
- Railway

Critical Services

- Emergency services
- Public Services
- Power, Water & Petrol services

Designated Sites

- SSSI
- RAMSAR
- AONB

Heritage Features

- Listed Buildings
- Registered Parks Gardens
- Ancient Woodland

Barnet Local Flood Risk Management Strategy



This product includes mapping data licensed from Ordnance Survey with the permission of © Crown copyright [and database rights] 2016 OS 100017674 EUL. This product includes data licensed from the London Borough of Barnet with the permission of © London Borough of Barnet, 2016. All rights reserved.



Scale at A3 1:28,000	Date March 2016	Drawn by T. Godman	Approved by C. Despins
--------------------------------	---------------------------	------------------------------	----------------------------------

Areas Susceptible to Main River Flooding (SE region)

Consultant

CAPITA

Capita
Level Four,
65 Gresham Street,
London
EC2V 7NQ








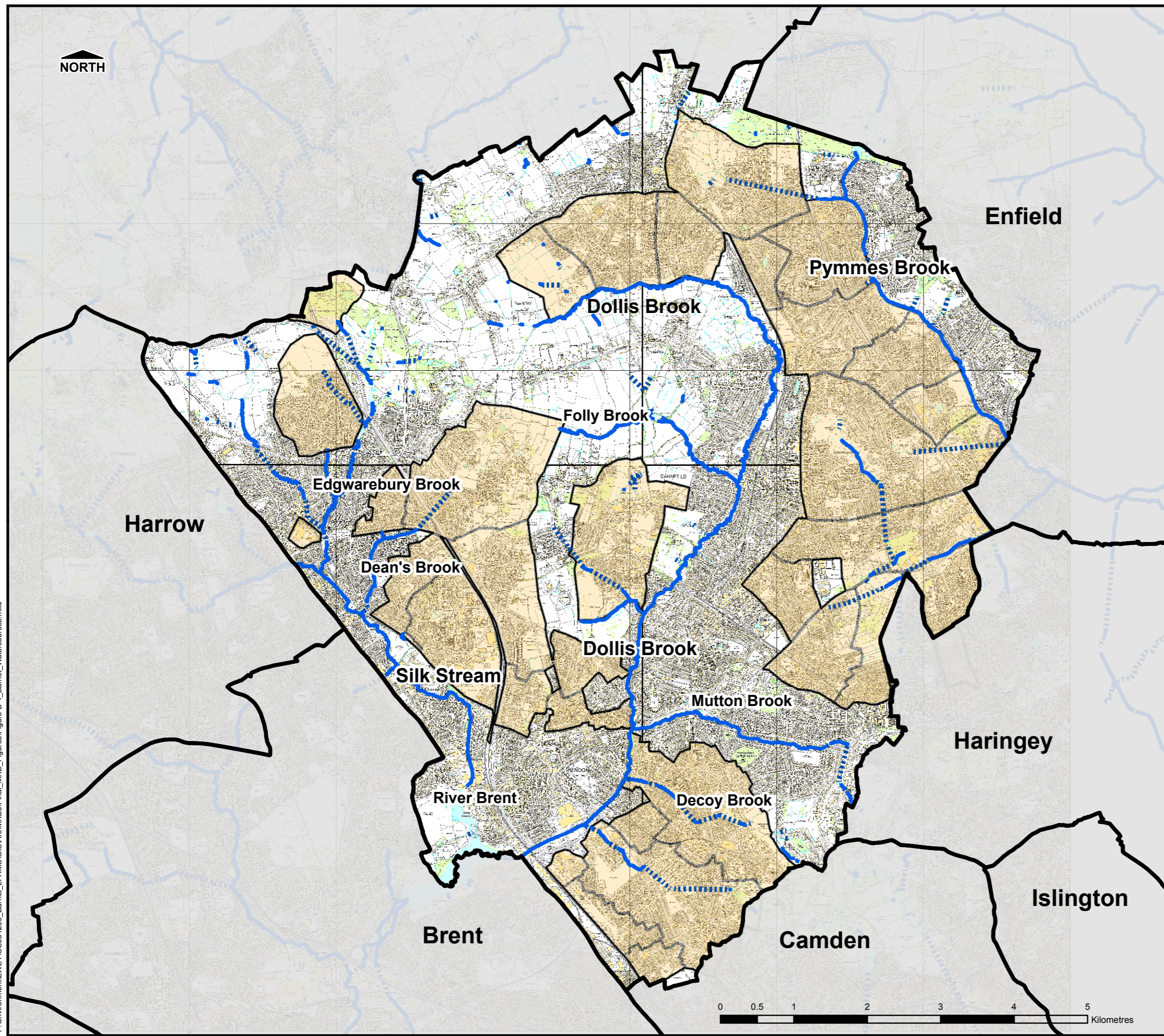
FIGURE B-3d

P:\environment\ZWE\TCS084290_Barnet_LFRM\GIS\ArcMXDs\Final_MXD_Figures\Figure_B-3d_Areas_Susceptible_to_River_flooding_SE.mxd

THIS DRAWING MAY BE USED ONLY FOR THE PURPOSE INTENDED

Legend

-  Barnet Administrative Boundary
-  Critical Drainage Areas from 2011 SWMP
-  Main River
-  Ordinary Watercourse
-  Culverted Watercourse



Barnet Local Flood Risk Management Strategy



This product includes mapping data licensed from Ordnance Survey with the permission of © Crown copyright [and database rights] 2016 OS 100017674 EUL. This product includes data licensed from the London Borough of Barnet with the permission of © London Borough of Barnet, 2016. All rights reserved.



Scale at A3 1:50,000	Date March 2016	Drawn by T. Godman	Approved by C. Despins
--------------------------------	---------------------------	------------------------------	----------------------------------

Watercourses within the London Borough of Barnet

Consultant

CAPITA


Capita
Level Four,
65 Gresham Street,
London
EC2V 7NQ

FIGURE B-4


P:\environment\ZWC\TCS084290_Barnet_LFRMS\GIS\Arc\MXDs\Final_MXD_Figures\Figure B-4_Barnet_Watercourses.mxd

THIS DRAWING MAY BE USED ONLY FOR THE PURPOSE INTENDED

Legend

 Borough Administrative Boundary

 Main River

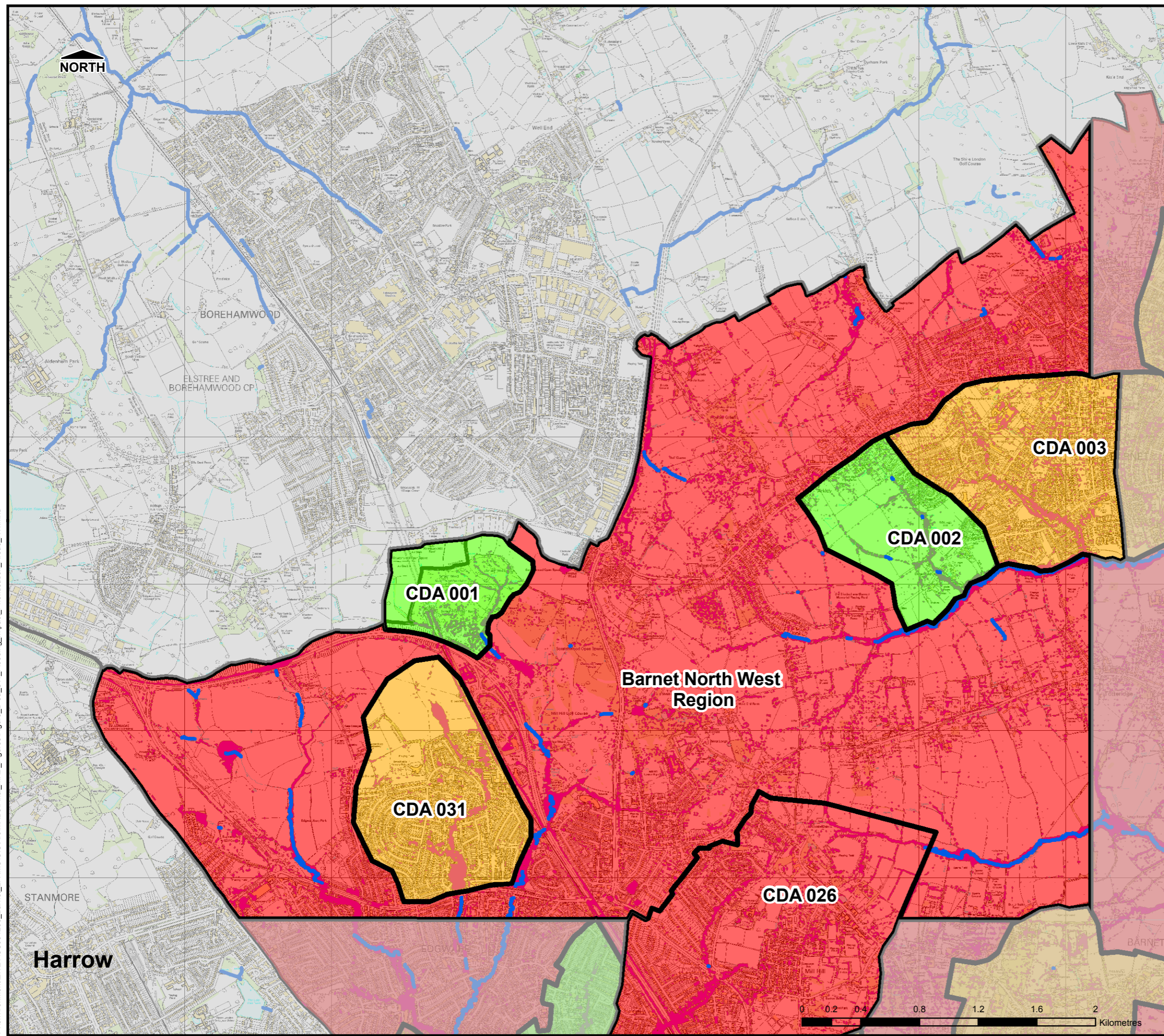
 200yr Surface Water Event

CDA Investigation Study

 HIGH

 MEDIUM

 LOW



Barnet Local Flood Risk Management Strategy



This product includes mapping data licensed from Ordnance Survey with the permission of © Crown copyright [and database rights] 2016 OS 100017674 EUL. This product includes data licensed from the London Borough of Barnet with the permission of © London Borough of Barnet, 2016. All rights reserved.



Scale at A3 1:25,000	Date March 2016	Drawn by T. Godman	Approved by C. Despins
--------------------------------	---------------------------	------------------------------	----------------------------------

Surface Water Flooding Impact Prioritised Areas (NW region)

Consultant

CAPITA


Capita
Level Four,
65 Gresham Street,
London
EC2V 7NQ

FIGURE B-5a


P:\environment\ZMET\CS084290_Barnet_LFRMS\GIS\Ac\MXD\Final_MXD_Figures\Figure_B-5a_SW_Flooding_Impact_Prioritisation_Areas_NW.mxd

THIS DRAWING MAY BE USED ONLY FOR THE PURPOSE INTENDED

Legend

 Borough Administrative Boundary

 Main River

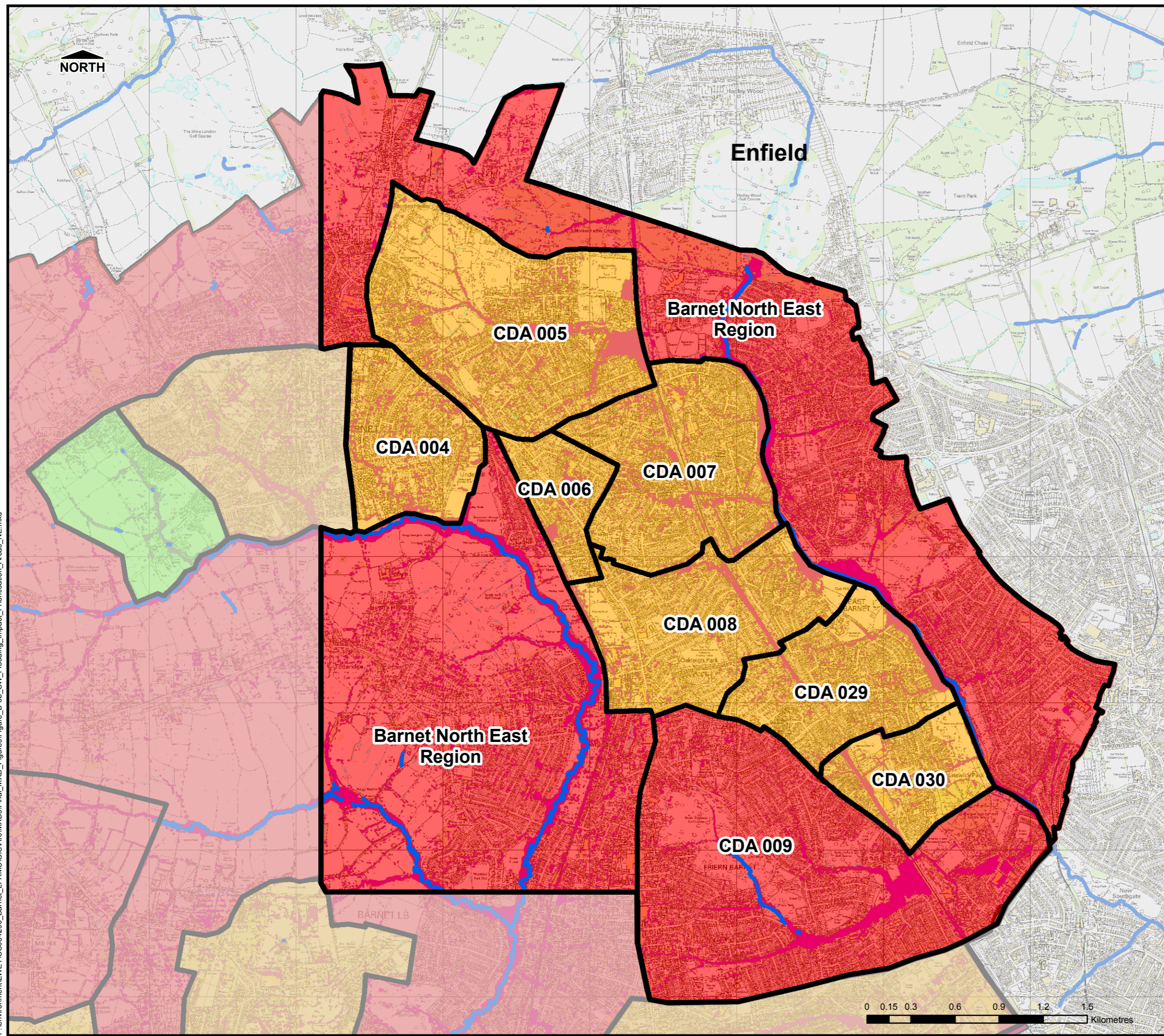
 200yr Surface Water Event

CDA Investigation Study

 High

 Medium

 Low



Barnet Local Flood Risk Management Strategy



This product includes mapping data licensed from Ordnance Survey with the permission of © Crown copyright [and database rights] 2016 OS 100017674 EUL. This product includes data licensed from the London Borough of Barnet with the permission of © London Borough of Barnet, 2016. All rights reserved.



Scale at A3 1:25,000	Date March 2016	Drawn by T. Godman	Approved by C. Despins
--------------------------------	---------------------------	------------------------------	----------------------------------

Surface Water Flooding Impact Prioritised Areas (NE region)

Consultant

CAPITA

Capita
Level Four,
65 Gresham Street,
London
EC2V 7NQ

FIGURE B-5b

P:\environment\ZWE\TCS0504290_Barnet_LFRMS\GIS\Arc\MXDs\Final_MXD_Figures\Figure_B-5b_SW_Flooding_Impact_Prioritisation_Areas_NE.mxd

THIS DRAWING MAY BE USED ONLY FOR THE PURPOSE INTENDED

Legend

Borough Administrative Boundary

Main River

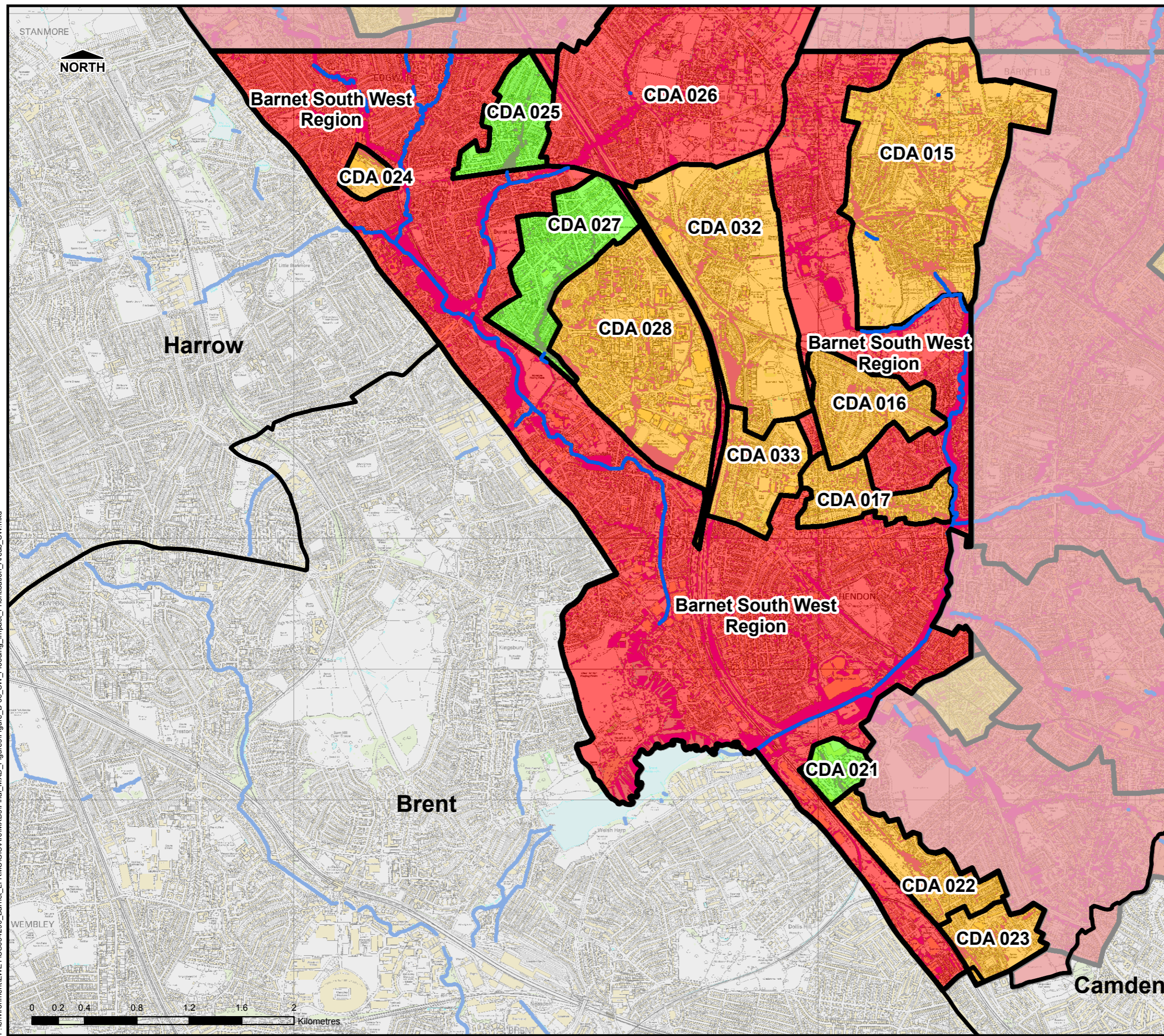
200yr Surface Water Event

CDA Investigation Study

High

Medium

Low



Barnet Local Flood Risk Management Strategy



This product includes mapping data licensed from Ordnance Survey with the permission of © Crown copyright [and database rights] 2016 OS 100017674 EUL. This product includes data licensed from the London Borough of Barnet with the permission of © London Borough of Barnet, 2016. All rights reserved.



Scale at A3 1:28,000	Date March 2016	Drawn by T. Godman	Approved by C. Despins
--------------------------------	---------------------------	------------------------------	----------------------------------

Surface Water Flooding Impact Prioritised Areas (SW region)

Consultant



Capita
Level Four,
65 Gresham Street,
London
EC2V 7NQ




FIGURE B-5c

P:\environment\ZWE\TCS054290_Barnet_LFRMS\GIS\Arc\MXDs\Final_MXD_Figures\Figure_B-5c_SW_Flooding_Impact_Prioritisation_Areas_SW.mxd




0 0.2 0.4 0.8 1.2 1.6 2 Kilometres

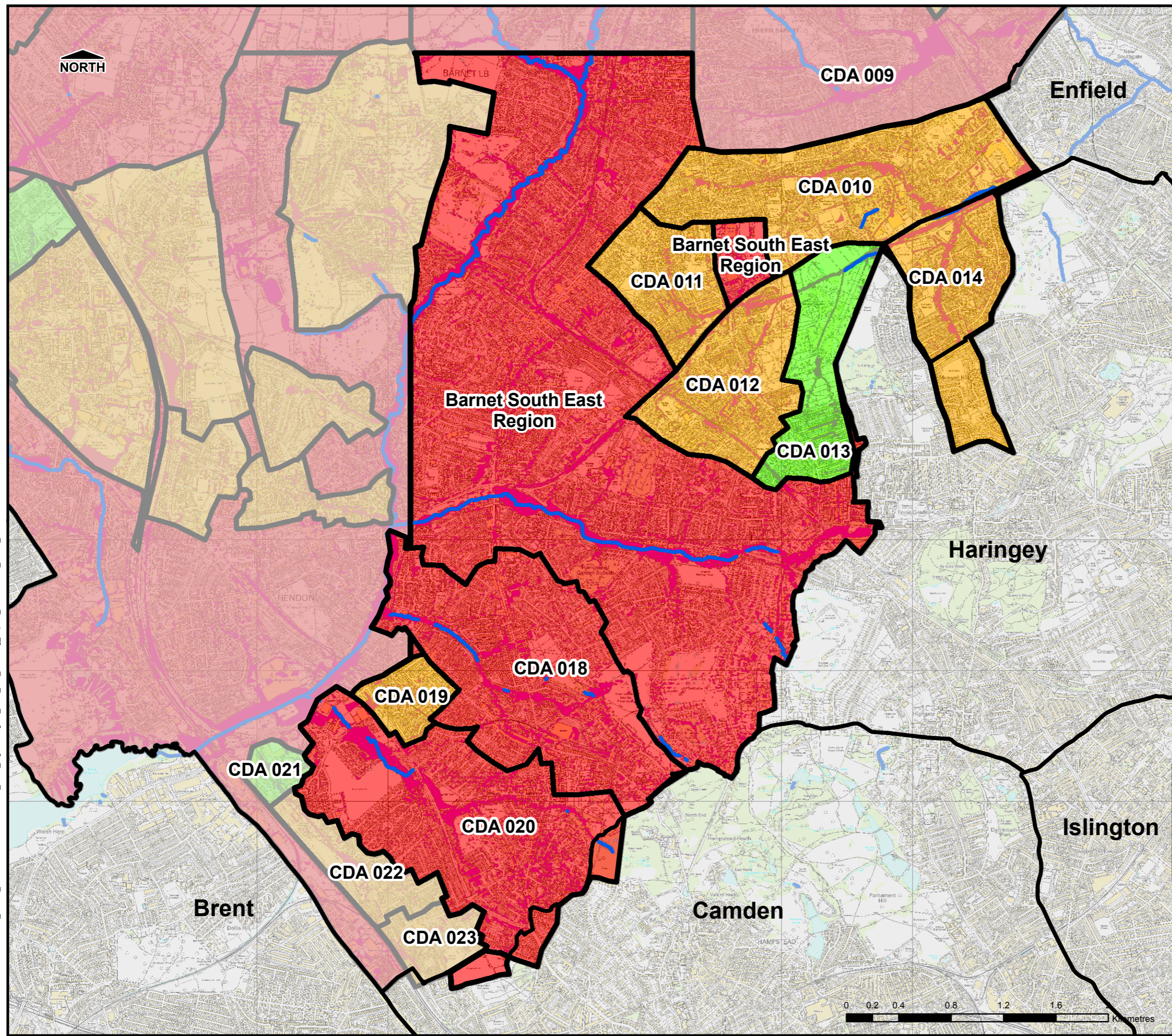
THIS DRAWING MAY BE USED ONLY FOR THE PURPOSE INTENDED

Legend

-  Borough Administrative Boundary
-  Main River
-  200yr Surface Water Event

CDA Investigation Study

-  High
-  Medium
-  Low



Barnet Local Flood Risk Management Strategy



This product includes mapping data licensed from Ordnance Survey with the permission of © Crown copyright [and database rights] 2016 OS 100017674 EUL. This product includes data licensed from the London Borough of Barnet with the permission of © London Borough of Barnet, 2016. All rights reserved.



Scale at A3 1:28,000	Date March 2016	Drawn by T. Godman	Approved by C. Despins
--------------------------------	---------------------------	------------------------------	----------------------------------

Surface Water Flooding Impact Prioritised Areas (SE region)

Consultant



Capita
Level Four,
65 Gresham Street,
London
EC2V 7NQ

FIGURE B-5d

P:\environment\ZMET\CS084290_Barnet_LFRMS\GIS\Ac\MXDs\Final_MXD_Figures\Figure_B-5d_SW_Flooding_Impact_Prioritisation_Areas_SE.mxd