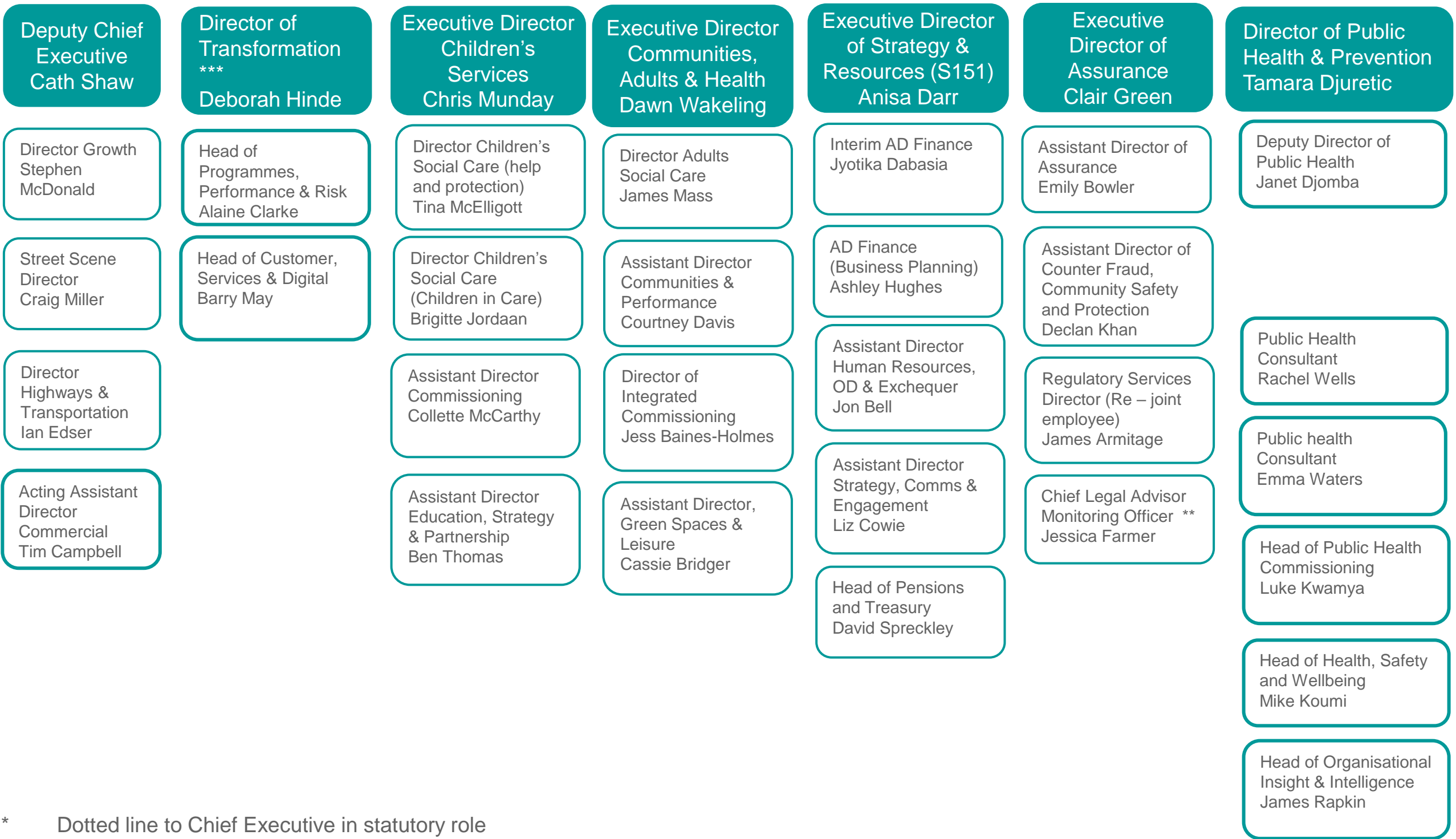


Senior Management Structure

Chief Executive

John Hooton

CMT



** Dotted line to Chief Executive in statutory role

*** Dotted line to Deputy Chief Executive

Deputy Chief Executive
Cath Shaw

Director Growth
Stephen McDonald

Director Street Scene
Craig Miller

Director Highways & Transportation
Ian Edser

Director of Transformation
*** Deborah Hinde

Head of Programmes, Performance & Risk
Alaine Clarke

Head of Customer, Services & Digital
Barry May

Acting Assistant Director Commercial
Tim Campbell

Assistant Director Estates & Acquisitions
Chris Smith

Interim AD Development & Economy
Matin Miah

Director Brent Cross
Luke Ward

Assistant Director Capital Strategy
Matt Waters

AD Development Delivery
Abid Arai

AD Sustainability & Insight
Yogita Popat

Environment & Sustainability Programme Lead
Cara Elkins

Head of Property & Portfolio Management
Melanie Chiknagi

Head of Asset Management & Estates
Syma Kadri

Head of Housing & Regeneration
Susan Curran

Head of Economic Development
Jamie Robinson

Capital Delivery Portfolio Lead
Charles Parish

Director Planning & Building Control
Fabien Gaudin

Assistant Director Strategic planning & Building Control
Neeru Kareer

Head of Street Scene Operations
VACANT

Head of Fleet, Transport & Logistics
Vishal Thaker

Head of Street Scene Service Support
MATERNITY LEAVE

AD Parking
Phil Hoare

Head of Network & Infrastructure
Paul Bragg

Commercial Sales Manager
Siddiq Khan

Business Operations Manager
Roger Greensted

Member Liaison Manager
Jackie Staples

Innovation & Behavioural Change Manager
Alice Nugent

Operations Director
Andrew Gudge

Highways Technical Associate
Federico Marsili

Operations Manager Development Control
Andy Hilsdon

Operations Manager Brent Cross
Richard Pelham

Operations Manager Traffic & Travel
Sudhish Nair

Operations Manager Assets
Daniela Pometti

Operations Manager Traffic & Compliance
VACANT

Head of Transport Strategy
Andrew Barry-Pursell

*** Directly reports to the Chief Executive

Executive Director Children's Services

Chris Munday

Director Children's Social Care (Help & Protection)

Tina McElligott

Head of MASH, YOS,
REACH, LADO & EDT
Sarah Marshall

Head of Duty, Assessment,
Intervention & Planning
Karen Popely

Head of 0-19 Early Help
Service
Karen Pearson

Head of Safeguarding,
Quality & Workforce Dev
Donna Swanberg

Clinical Lead - Barnet
Integrated Clinical Service
(BICS)
Dr Anindita Sarkar

Director Children's Social Care (Corporate Parenting & Disability)

Brigitte Jordaan

Head of 0-25 Disabilities,
Specialist Autism Team
Owen Chiguvare

Strategic Manager for
Disability
Vacant

Head of CIC, O&U,
Placements, Fostering &
Carer recruitment, Family
Resource centre, Children's
homes
Kate Jeffrey

Assistant Director Commissioning

Collette McCarthy

Head of Strategy, Insight &
Commissioning
Grace Walker

Head of Libraries
Hannah Richens

Head of Support Service
Rachel Williams

Assistant Director Education, Strategy & Partnership

Ben Thomas

Functions:

- Education and Skills contract commissioning
- Pupil based planning

Barnet Safeguarding
Children's Partnership

Executive Director Communities, Adults & Health

Dawn Wakeling

Director Adults Social Care

James Mass

Head of Mental Health
Vacant
Teresa Gravett-Smith (from Dec 2022)

Head of Assessment &
Prevention
Monica Przyzycka

Head of Service, Hospitals
& Health
Lisa Mathews

Head of Localities (older
people & physical
disabilities)
Harsha Pindoria

Head of Integrated Care
Learning Disabilities
Andrew Maskell

Principal Social Worker
(Head of Service)
Carol Baxter

Director of Integrated Commissioning

Jess Baines-Holmes

Joint Commissioning
- incl jointly funded posts
with CCG

Head of
Commissioning
Learning Disability &
Physical & Sensory
Impairment
Sue Tomlin/Rosie Greer
(Job share)

Head of
Commissioning
Mental Health &
Dementia
Ellie Chesterman

Head of
Commissioning
Older Adults &
Integrated Care
Muyi Adekoya

AD Communities & Performance

Courtney Davis

Head of
Transformation
Lindsey Hyde

Head of Performance
& Systems
Paul Kennedy

Head of Integrated
Care Quality &
Customer Finance
Sam Jacobson

AD Green Spaces & Leisure

Cassie Bridger

Head of Greenspaces
Matthew Gunyon

Functions:

- Green Spaces
- Parks
- Sports & Leisure
- Trees & Woodlands
- Events & Promotions
- Mortuary and Cemetery & Crematorium

Executive Director of Strategy and Resources (s151)
Anisa Darr

**Assistant Director –
Accountancy**
Jyotika Dabasia (Acting up)

Strategic Lead
Transformation
Matt Banks

Head of Finance
Chief Accountant
Mohammed Ahmed (Acting
up)

- Functions:
- Financial Planning
 - Grants
 - External Audit
 - Financial Assurance

**Assistant Director –
Business Partnering**
Ashley Hughes

Head of Finance
Customer, Place &
Corporate Reporting
Ndenko Asong (interim)

Head of Finance
Communities, Adults &
Public Health
Dean Langsdon

Head of Finance
Customer & Place
Nick Stylianou

Head of Finance
Family Services
Sharon Palma

Head of Finance
Major Projects
Gary Hussein

Head of Finance
Transformation
Dev Marriott (Secondment)

**Head of Pensions and
Treasury**
David Spreckley

- Functions:
- Treasury mgt
 - Pensions investment & triennial valuation
 - Pensions administration (WYPF)

**Assistant Director- HR,
OD & Exchequer**
Jon Bell

Head of Finance
Exchequer
Allan Clark

Head of Employee
Relations & Reward
Sharni Kent

Head of Organisational
Development
Amanda Buchanan

Head of Recruitment &
Resourcing
Matt Richards

- Functions:
- HR strategy (business partners, Employee relations, recruitment)
 - Organisational Development
 - Transactional HR
 - Revenues and Benefits

**Assistant Director
Strategy, Comms &
Engagement**
Liz Cowie

Interim Head of Comms
Marina Pirota

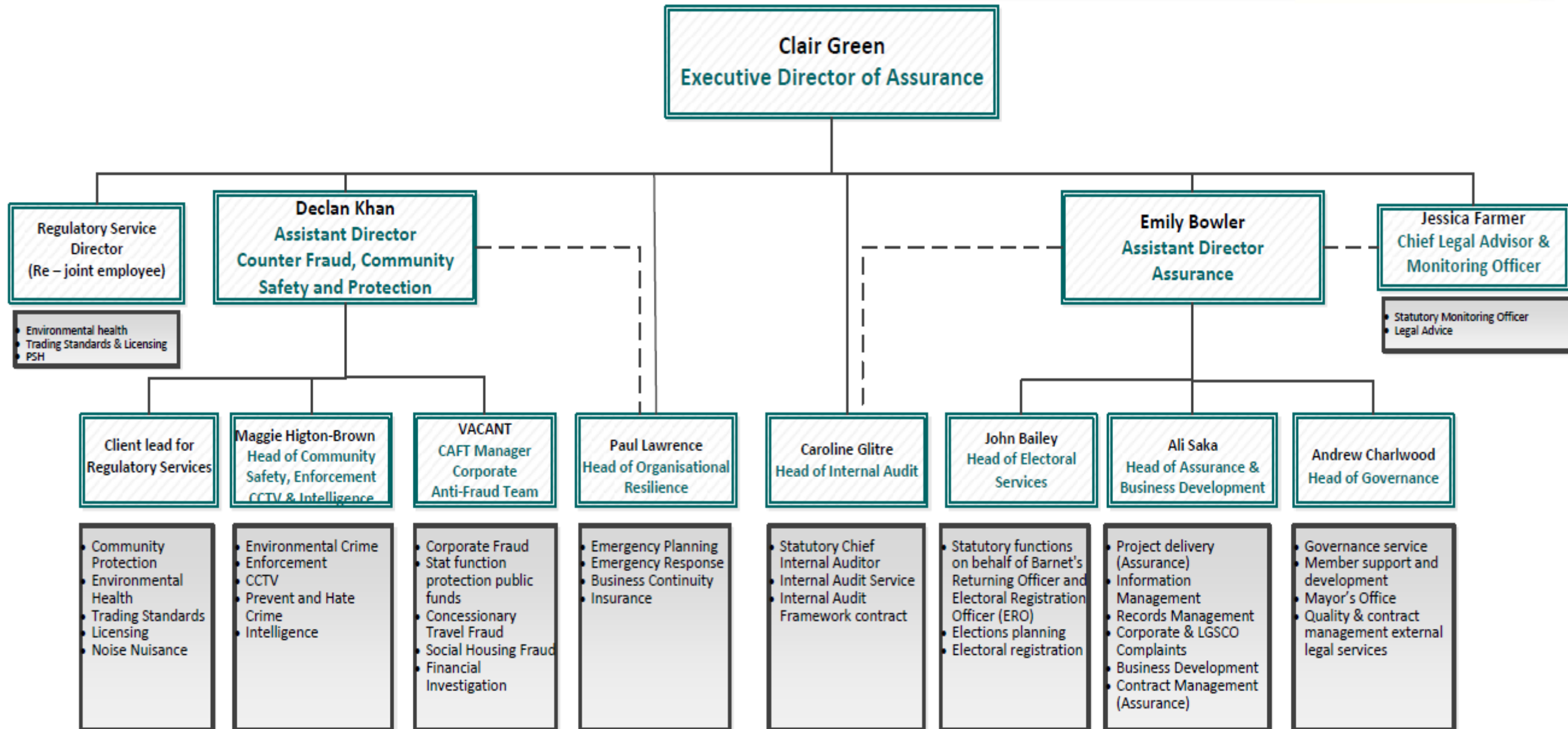
Deputy Head of Strategy &
Comm Participation
Will Cooper

Deputy Head of Comms
(Media & External)
Tristan Garrick

Deputy Head of Comms
(Internal and Contracts)
Johnathan Schroder

- Functions:
- Strategic Communications
 - Community Engagement
 - Corporate Strategy
 - Live Unlimited Charity

Assurance Group – Senior Management Team (October 2022)



KEY

— Line Management

- - - Direct working relationship

London Borough of Barnet Council – Public Health Directorate FINAL Organisational Structure (October 2022)

