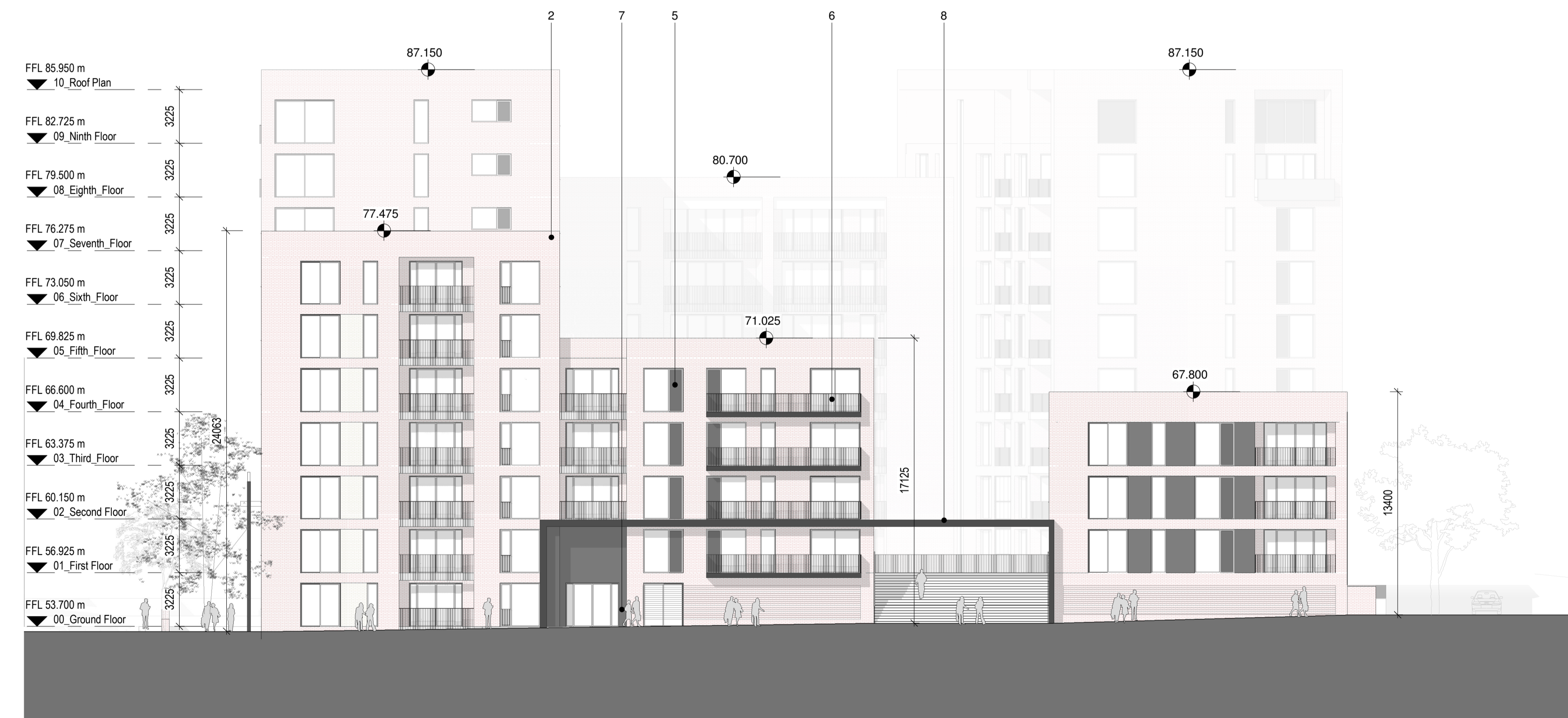




1 Block 1D_North Elevation
1 : 200

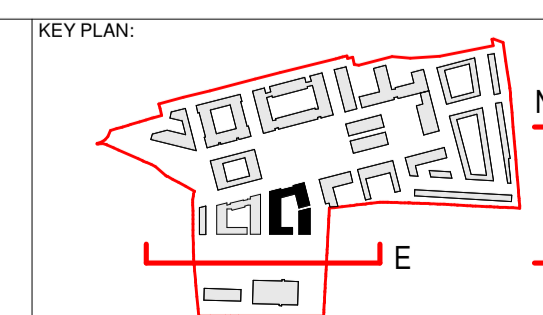


2 Block 1D_East Elevation
1 : 200

REV.	DATE:	DETAILS:	INITIALS:

- KEY TO MATERIAL:
1. Yellow Brick, horizontal stretcher course, bedded in white mortar
 2. Red Brick, horizontal stretcher course, bedded in white mortar
 3. White Brick, horizontal stretcher course, bedded in white mortar
 4. Aluminum joinery with Aluminum External Framing, colour White (set in white brick) & graphite Grey (set in red and yellow brick)
 5. Feature window vent openings to be provided in lacquered timber panel, within window fabrication
 6. Handrails/ Balustrades in black painted mild steel circular section vertical rails, with flat plate black painted mild steel handrail

7. Base plinth in grey Limestone laid in 300mm/ 450mm horizontal coursing
8. Parapets, copings & flashings in naturally patinated zinc sheeting
9. Glass Handrail
10. Architectural banding, coping to top of brickwork & localized detail executed with natural white granite stone
11. Dark Grey Renson Linarte facade



PLUSARCHITECTURE <small>Chancery Lane, Dublin 8, Ireland. W: www.plusarchitecture.ie T: 353 (0) 1 521 3378</small>		
PROJECT: North London Business Park	PROJECT: 211	DATE: 21/06/2021
CLIENT: The Comer Group	DRAWING NO.: 211_1D_04_01	REVISION NO.:
TITLE: Block 1D_North & East Elevation	DRAWN BY: JG	SCALE AT A1.: 1 : 200
ISSUE TYPE: Planning	CHECKED BY: DT	SCALE AT A3.:

Copyright of this drawing is vested in the Architect and it must not be copied or reproduced without consent. Figure dimensions only are to be taken from this drawing. All annotations must not only be responsible for being and checking all dimensions twice their work. PLUS Architecture are to be advised of any variation between drawings and the construction. DO NOT SCALE DIMENSIONS FROM DRAWINGS.