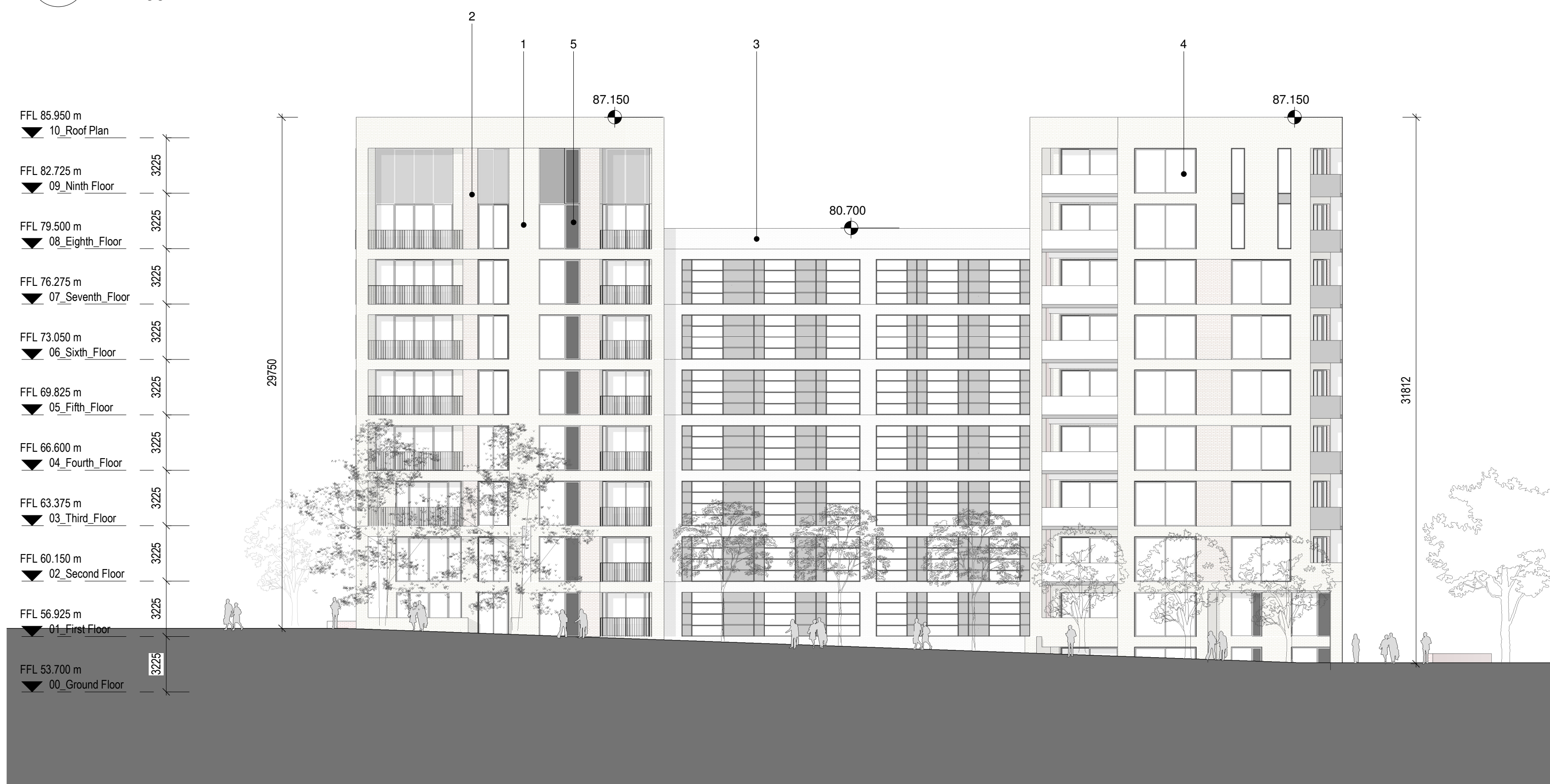


1 Block 1D\_South Elevation  
1 : 200



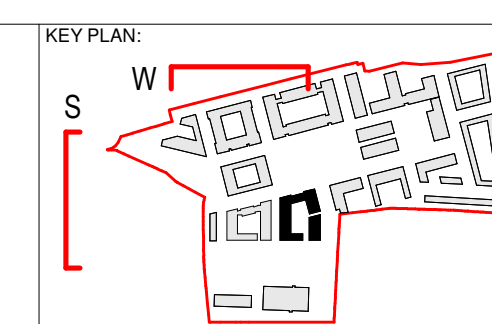
2 Block 1D\_West Elevation  
1 : 200

REV.	DATE:	DETAILS:	INITIALS:

KEY TO MATERIAL:

1. Yellow Brick, horizontal stretcher course, bedded in white mortar
2. Red Brick, horizontal stretcher course, bedded in white mortar
3. White Brick, horizontal stretcher course, bedded in white mortar
4. Aluminum joinery with Aluminum External Framing, colour White (set in white brick) & graphite Grey (set in red and yellow brick)
5. Feature window vent openings to be provided in lacquered timber panel, within window fabrication
6. Handrails/ Balustrades in black painted mild steel circular section vertical rails, with flat plate black painted mild steel handrail

7. Base plinth in grey Limestone laid in 300mm/ 450mm horizontal coursing
8. Parapets, copings & flashings in naturally patinated zinc sheeting
9. Glass Handrail
10. Architectural banding, coping to top of brickwork & localized detail executed with natural white granite stone
11. Dark Grey Renson Linarte facade



PROJECT:		DATE:
North London Business Park		21/06/2021
CLIENT: The Comer Group		REVISION NO.:
DRAWING NO.: 211_1D_04_02		SCALE AT A1 : 1 : 200
DRAWN BY: JG		SCALE AT A3 : 1 : 200
TITTLE: Block 1D_South & West Elevation		CHECKED BY: DT
ISSUE TYPE: Planning		