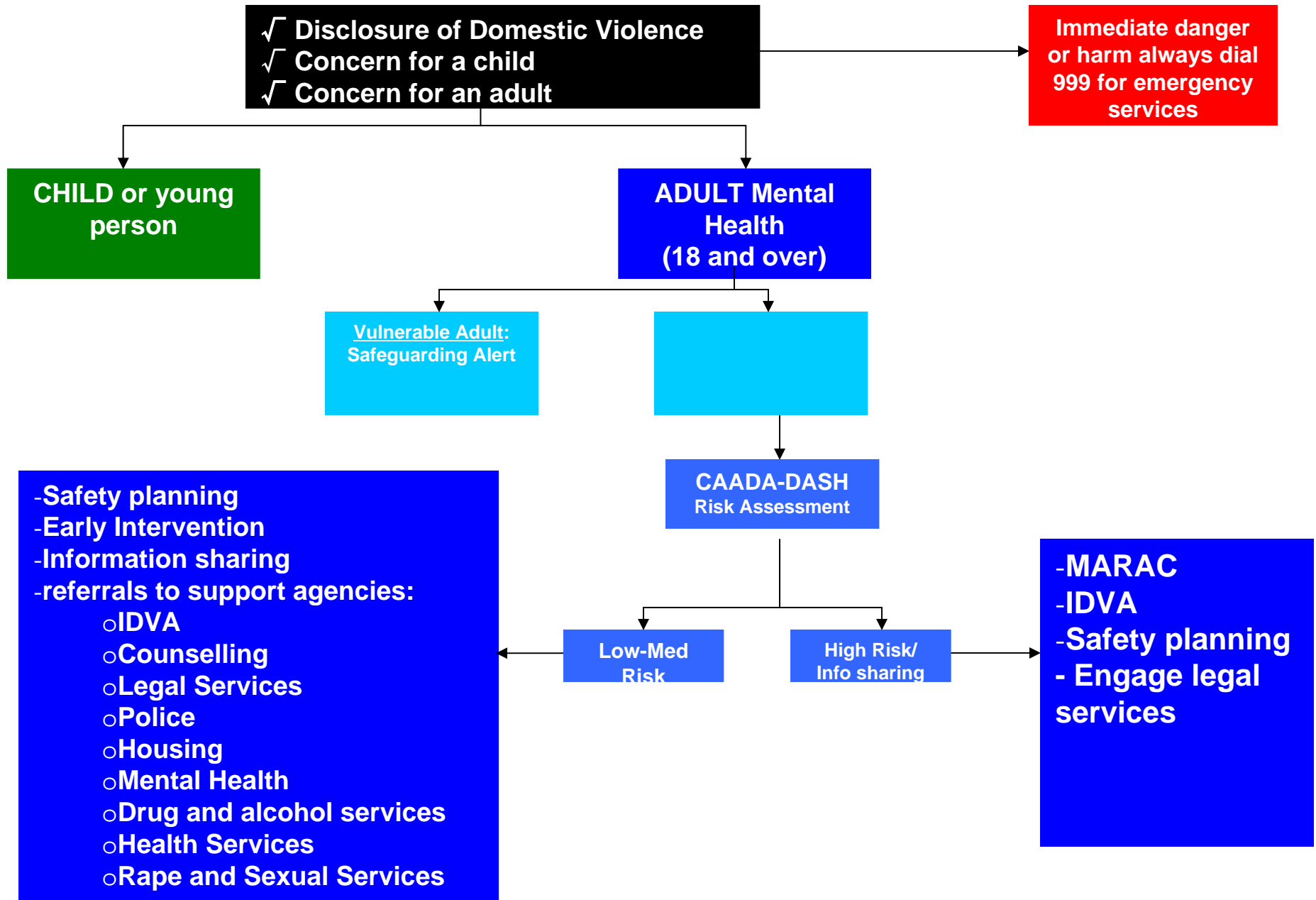


Edgware Hospital – Mental Health Services



√ Disclosure of Domestic Violence
√ Concern for a child
√ Concern for an adult

Immediate danger
or harm always dial
999 for emergency
services

CHILD or young
person

ADULT Mental
Health
(18 and over)

Vulnerable Adult:
Safeguarding Alert

CAADA-DASH
Risk Assessment

Low-Med
Risk

High Risk/
Info sharing

-Safety planning
-Early Intervention
-Information sharing
-referrals to support agencies:
o IDVA
o Counselling
o Legal Services
o Police
o Housing
o Mental Health
o Drug and alcohol services
o Health Services
o Rape and Sexual Services

-MARAC
-IDVA
-Safety planning
- Engage legal
services

RESPOND...

✓ Disclosure of Domestic Violence
✓ Concern for a child
✓ Concern for an adult

Immediate danger or harm always dial 999 for emergency services

CHILD or young person (under 18)

Police (only) raise a MERLIN

Under 12 months (including pre-natal)

12 months to 17 years

Children's Services Assessment Team
Safety Planning
Consider MARAC Referral
Information sharing with relevant professionals to support child/ren

Risk is not static and can change, referring agency should not consider a referral to CS the end of the process

Barnados Risk Assessment Matrix (complete with agency CP lead)

Scale 4

Scale 3

Scale 2

Scale 1

CAF
Early Intervention
Safety Planning
CAMHS
Counselling/WISH
Drug and alcohol services
Health Services
Extended school support