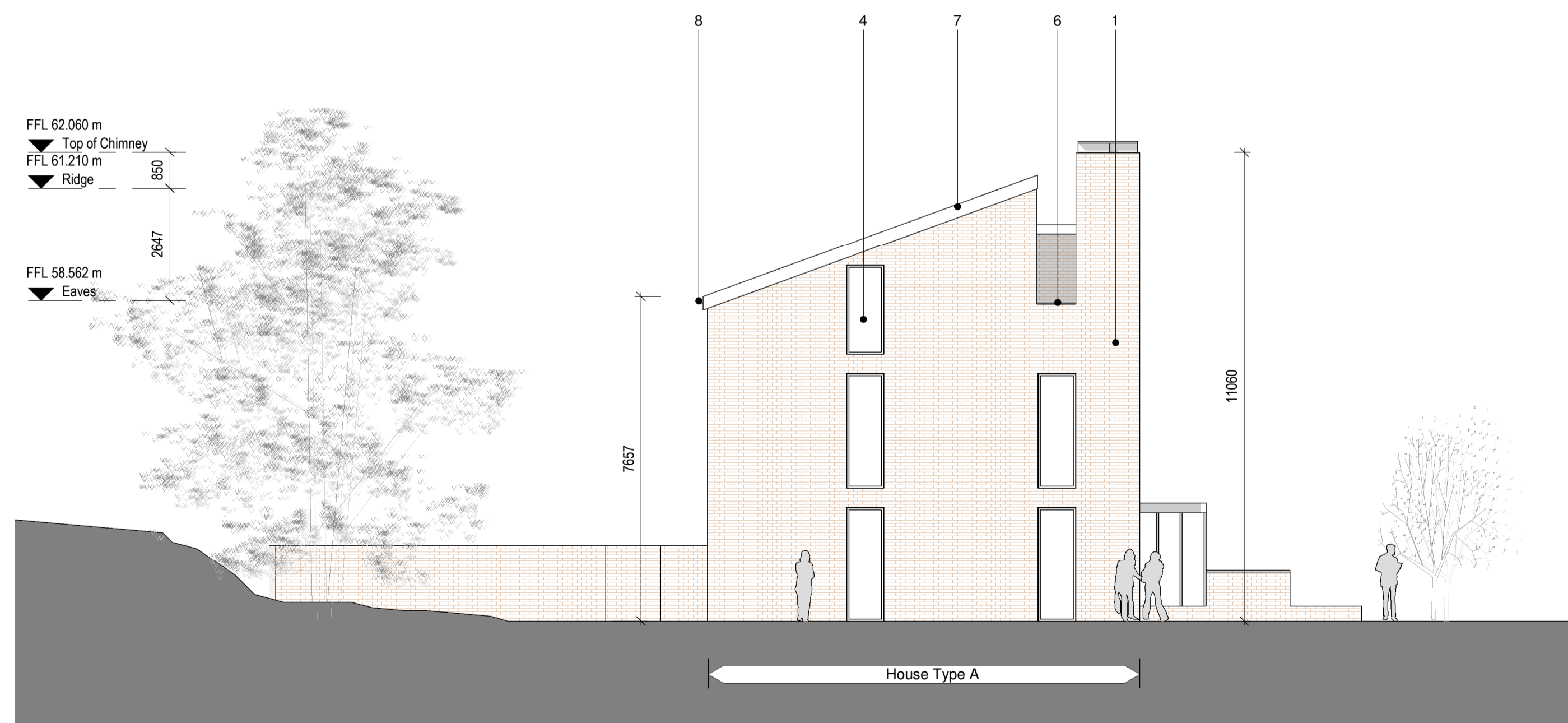




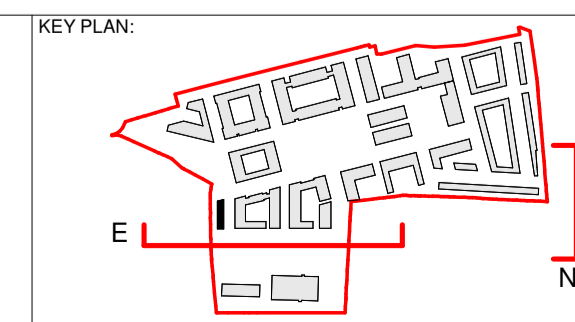
1 Block 1B_North Elevation
1 : 100



2 Block 1B_East Elevation
1 : 100

REV.	DATE:	DETAILS:	INITIALS:

- KEY TO MATERIAL:
1. Brown Brick, horizontal stretcher course, bedded in white mortar
 2. Dark Grey Renson Linius facade
 3. Solid Timber panelling
 4. Aluminum joinery with Aluminum External Framing, colour Graphite Grey
 5. Handrails/ Balustrades in black painted mild steel circular section vertical rails, with flat plate black painted mild steel handrail
 6. Parapets, copings & flashings in naturally patinated zinc sheeting
 7. Natural Slate Roofing
 8. Zinc gutter and rainwater downpipes



PLUSARCHITECTURE Chancery Lane, Dublin 8, Ireland. W: www.plusarchitecture.ie T: 353 (0) 1 521 3378		PROJECT: 211 DRAWING NO.: 211_1B_04_01 DRAWN BY.: JG CHECKED BY.: DT	DATE: 21/06/2021 REVISION NO.: SCALE AT A1.: 1 : 100 SCALE AT A3.:
PROJECT: North London Business Park CLIENT: The Comer Group TITLE: Block 1B_North & East Elevations ISSUE TYPE: Planning	PROJECT: 211 DRAWING NO.: 211_1B_04_01 DRAWN BY.: JG CHECKED BY.: DT	DATE: 21/06/2021 REVISION NO.: SCALE AT A1.: 1 : 100 SCALE AT A3.:	

Copyright of this drawing is vested in the Architect and it must not be copied or reproduced without consent. Figure dimensions only are to be taken from this drawing. All contractors must visit site and be responsible for setting and checking all dimensions against their work. PLUS Architecture are in no way liable for any variation between drawings and site conditions. DO NOT SCALE OFF THIS DRAWING. ... or DISOBEY SIGN