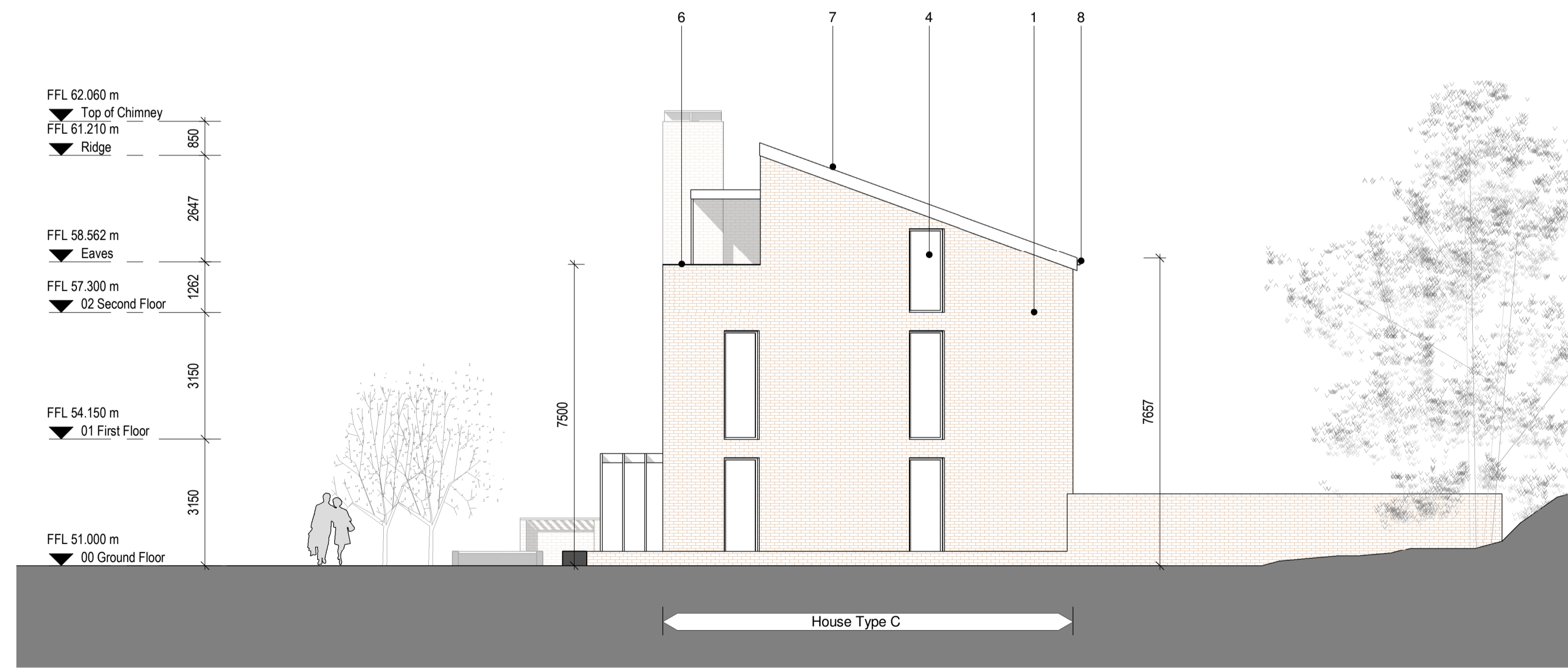




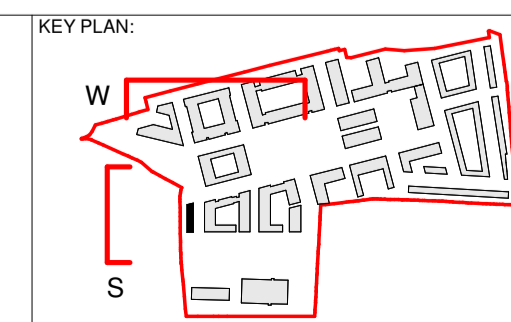
1 Block 1B\_South Elevation  
1 : 100



2 Block 1B\_West Elevation  
1 : 100

REV.	DATE:	DETAILS:	INITIALS:

- KEY TO MATERIAL:
1. Brown Brick, horizontal stretcher course, bedded in white mortar
  2. Dark Grey Renson Linius facade
  3. Solid Timber panelling
  4. Aluminum joinery with Aluminum External Framing, colour Graphite Grey
  5. Handrails/ Balustrades in black painted mild steel circular section vertical rails, with flat plate black painted mild steel handrail
  6. Parapets, copings & flashings in naturally patinated zinc sheeting
  7. Natural Slate Roofing
  8. Zinc gutter and rainwater downpipes



<b>PLUSARCHITECTURE</b> Chancery Lane, Dublin 8, Ireland. W: www.plusarchitecture.ie T: 353 (0) 1 521 3378		PROJECT: 211 DATE: 21/06/2021
PROJECT: North London Business Park CLIENT: The Comer Group	DRAWING NO.: 211_1B_04_02 DRAWN BY.: DW	REVISION NO.: SCALE AT A1.: 1 : 100
TITLE: Block 1B_South & West Elevations ISSUE TYPE: Planning	CHECKED BY.: DT	SCALE AT A3.:

Copyright of this drawing is vested in the Architect and it must not be copied or reproduced without consent. Figures dimensions only are to be taken from this drawing. All annotations must not only be responsible for being and checking all dimensions within their work. PLUS Architecture are in the event of any variation between drawings and the construction. DO NOT SCALE DIMENSIONS FROM DRAWINGS OR IN DOUBT ASK.