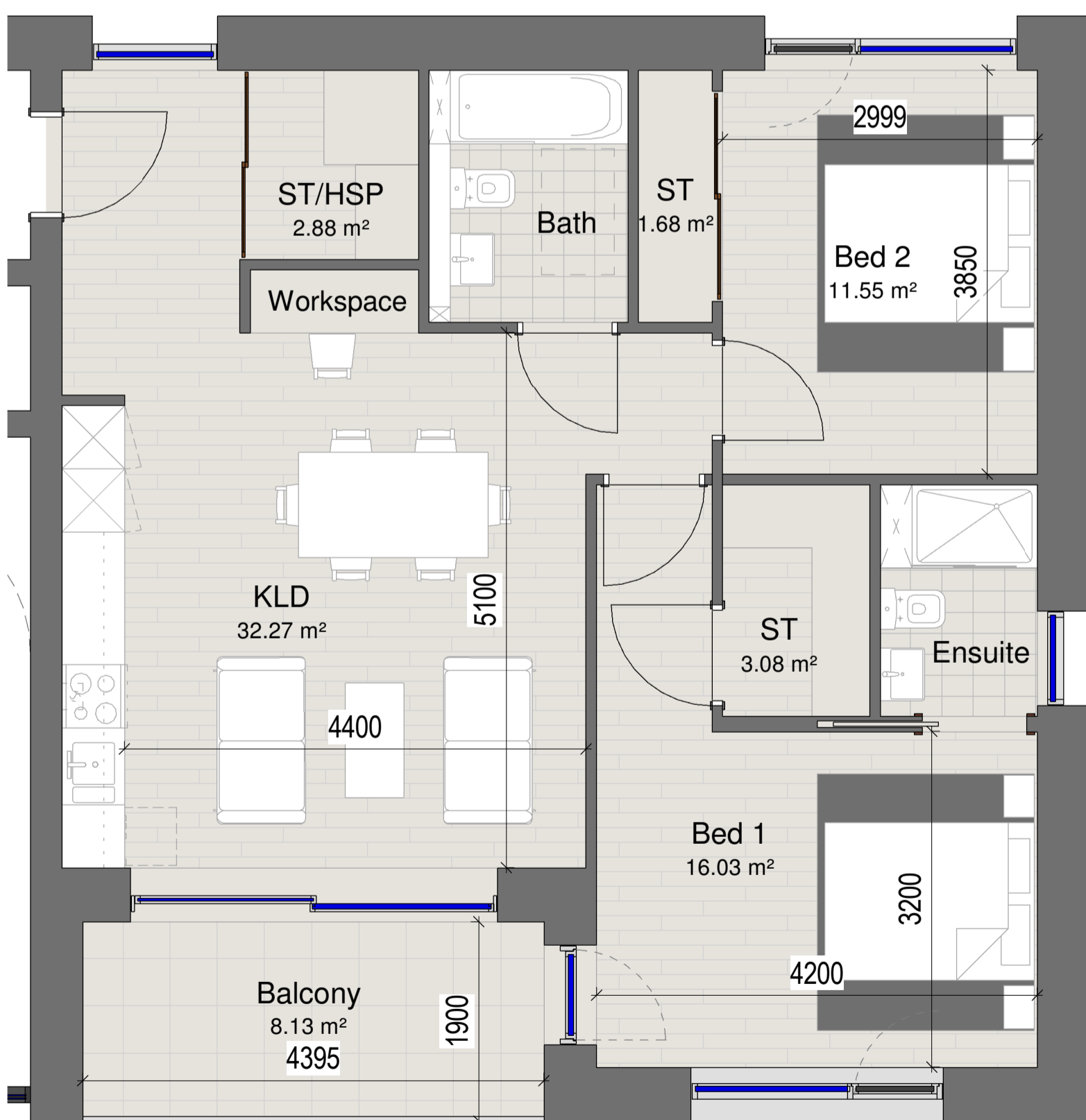


1 **Block C\_2 Bedroom Apartment Type 07**  
1 : 50  
Size: 76.4m<sup>2</sup>  
Total Apartments: 6



2 **Block C\_2 Bedroom Apartment Type 08**  
1 : 50  
Size: 78.7m<sup>2</sup>  
Total Apartments: 4



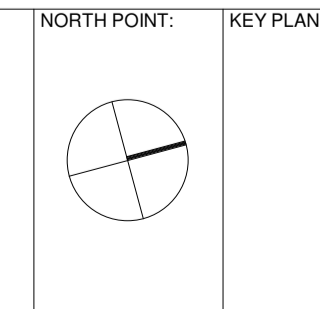
3 **Block C\_2 Bedroom Apartment Key Plan\_Type 07 & 08**  
1 : 200

■ Apartment Type 07  
■ Apartment Type 08

REV.	DATE:	DETAILS:	INITIALS:

**LEGEND**  
KLD: Kitchen, Living and Dining Room  
ST: Storage Cupboard / Wardrobe  
ST/HSP: Storage Cupboard / Heat Source Pump  
HSP: Heat Source Pump Cupboard

Copyright of this drawing is vested in the Architect and it must not be copied or reproduced without consent. Figures dimensions only are to be taken from this drawing. All contractors must read and be responsible for being and checking all dimensions against their work. PLUS Architecture are to be advised of any variation between drawings and site conditions.  
20-03-2021 10:00 AM: final drawings - DT or 20-03-2021 AM



<b>PLUS ARCHITECTURE</b>		
<small>Chancery Lane, Dublin 8, Ireland. W: www.plusarchitecture.ie T: 353 (0) 1 521 3378</small>		
<small>PROJECT:</small> North London Business Park	<small>PROJECT:</small> 211	<small>DATE:</small> 21/06/2021
<small>CLIENT:</small> The Comer Group	<small>DRAWING NO.:</small> 211_C_09_09	<small>REVISION NO.:</small>
<small>TITLE:</small> Block C_2 Bedroom Apartment type 07 & 08	<small>DRAWN BY:</small> JG	<small>SCALE AT A1.:</small> As indicated
<small>ISSUE TYPE:</small> Planning	<small>CHECKED BY:</small> DT	<small>SCALE AT A3.:</small>