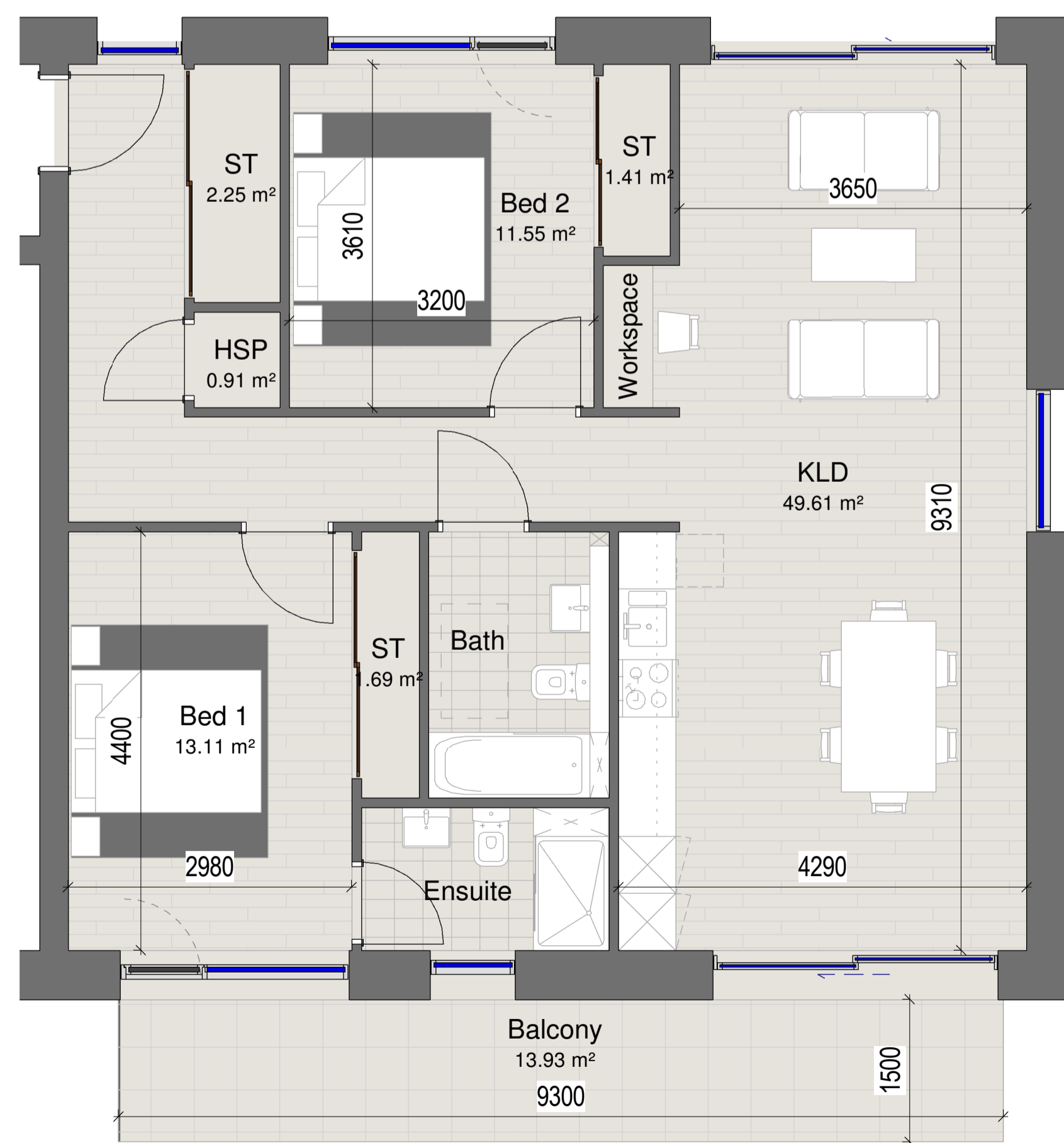


1 **Block D\_2 Bedroom Apartment Type 03**  
 1 : 50 Size: 84.2m<sup>2</sup>  
 Total Apartments: 8



2 **Block D\_2 Bedroom Apartment Type 04**  
 1 : 50 Size: 93.8m<sup>2</sup>  
 Total Apartments: 3



3 **Block D\_2 Bedroom Apartment Key Plan\_Type 03 & 04**  
 1 : 200

■ Apartment Type 03  
 ■ Apartment Type 04

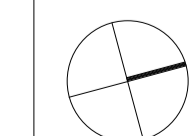
**LEGEND**

KLD: Kitchen, Living and Dining Room  
 ST: Storage Cupboard / Wardrobe  
 ST/HSP: Storage Cupboard / Heat Source Pump  
 HSP: Heat Source Pump Cupboard

Copyright of this drawing is vested in the architect and it may not be copied or reproduced without consent. Figures dimensions only are to be taken from this drawing. All contractors must refer to and be responsible for setting and checking all dimensions against their work. PLUS Architecture are to be advised of any variation between drawings and the construction.

REV.	DATE:	DETAILS:	INITIALS:

NORTH POINT: KEY PLAN:



++  
**PLUSARCHITECTURE**

PROJECT: North London Business Park  
 CLIENT: The Corner Group  
 TITLE: Block D\_2 Bedroom Apartment type 03 & 04  
 ISSUE TYPE: Planning

Chancery Lane, Dublin 8, Ireland. W: www.plusarchitecture.ie T: 353 (0) 1 521 3378

PROJECT: 211	DATE: 21/06/2021
DRAWING NO.: 211_D_09_11	REVISION NO.:
DRAWN BY: JG	SCALE AT A1: As indicated
CHECKED BY: DT	SCALE AT A3: