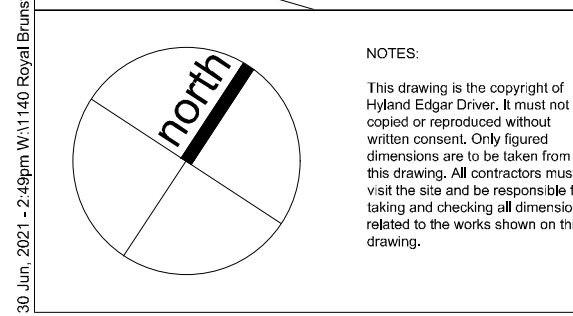
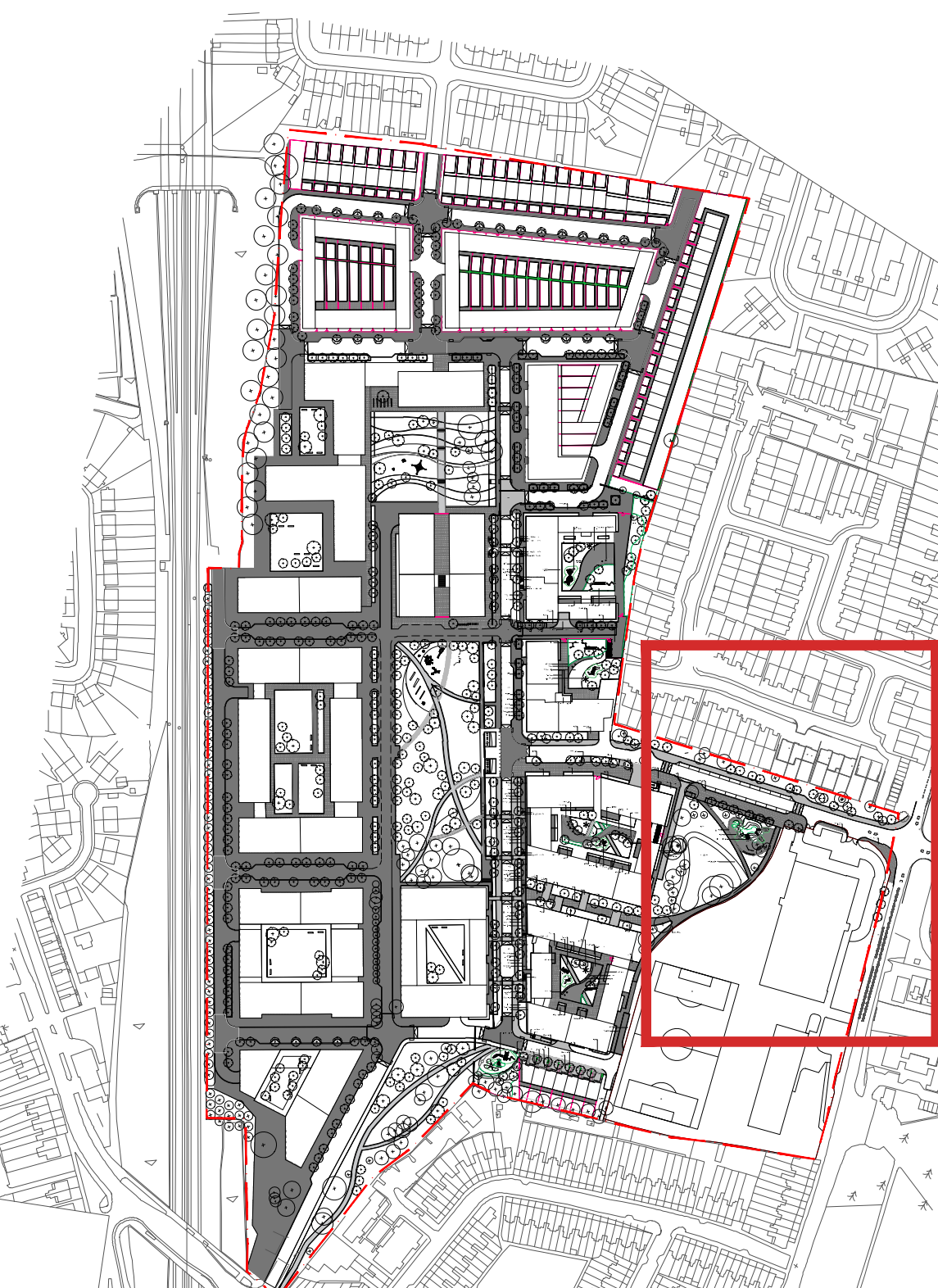


KEY	
Hard landscape	
	Concrete Pavers TYPE 01 300 x 600 x 85mm 3 tones of grey
	Concrete Pavers TYPE 02 100 x 100 x 100mm light grey
	Concrete Pavers TYPE 03 200 x 400mm x 80mm 3 tones of grey
	Concrete Flags paving TYPE 04 400 x 400 x 20mm
	Shared surface Concrete covers random lengths 100 x random (100-300) x 10mm
	Resin bound surfacing
	Timber Decking
	Play Space with special surfacing
	Kerb
	Seat edge
	Fence
	Sliding gate
	Swing gate
	Existing tree to be retained
	Phase 1 boundary
	Outline planning boundary

Key Plan Not to Scale



**NOTES**  
 The drawings are the property of Hyland Edger Driver & Urban Architects. No part of this drawing may be reproduced, stored in a retrieval system, or transmitted in any form or by any means, electronic, mechanical, photocopying, recording, or by any information storage and retrieval system, without the prior written permission of Hyland Edger Driver & Urban Architects.

**SAFETY HEALTH AND ENVIRONMENT INFORMATION**  
 The drawings are the property of Hyland Edger Driver & Urban Architects. No part of this drawing may be reproduced, stored in a retrieval system, or transmitted in any form or by any means, electronic, mechanical, photocopying, recording, or by any information storage and retrieval system, without the prior written permission of Hyland Edger Driver & Urban Architects.

**REVISIONS**

NO.	DESCRIPTION	DATE

**REVISIONS**

NO.	DESCRIPTION	DATE

**REVISIONS**

NO.	DESCRIPTION	DATE

**REVISIONS**

NO.	DESCRIPTION	DATE

**REVISIONS**

NO.	DESCRIPTION	DATE

**DATE**  
28.06.21

**DESIGNED BY**  
JSD

**PLANNING**

**PROJECT**  
Royal Brunswick Park

**DRAWING TITLE**  
Phase 01 Hard Landscape: Area 03

**CLIENT**  
COMER GROUP

**SCALE**  
1:200

**PROJECT NO.**  
11004

**DATE**  
28.06.21

**ISSUE**  
00 Issue for Planning

**COMER GROUP**

**Hyland Edger Driver & Urban Architects**  
 London & Winchester

**H E D**

Hyland Edger Driver & Urban Architects  
 London & Winchester

11004  
 One Westway Way, Colindale Avenue, London NW9 1NU  
 020 7591 9000  
 01982 711 000